

# Anti-NFAT1 (pS326) Antibody

Rabbit polyclonal antibody to NFAT1 (pS326)

Catalog # AP61143

## Product Information

---

Application	WB
Primary Accession	<a href="#">Q13469</a>
Reactivity	Human
Host	Rabbit
Clonality	Polyclonal
Calculated MW	100146

## Additional Information

---

Gene ID	4773
Other Names	NFAT1; NFATP; Nuclear factor of activated T-cells cytoplasmic 2; NF-ATc2; NFATc2; NFAT pre-existing subunit; NF-ATp; T-cell transcription factor NFAT1
Target/Specificity	Recognizes endogenous levels of NFAT1 (pS326) protein.
Dilution	WB~~WB (1/500 - 1/1000)
Format	Liquid in 0.42% Potassium phosphate, 0.87% Sodium chloride, pH 7.3, 30% glycerol, and 0.09% (W/V) sodium azide.
Storage	Store at -20 °C.Stable for 12 months from date of receipt

## Protein Information

---

Name	NFATC2
Synonyms	NFAT1, NFATP
Function	Plays a role in the inducible expression of cytokine genes in T-cells, especially in the induction of the IL-2, IL-3, IL-4, TNF-alpha or GM-CSF (PubMed: <a href="#">15790681</a> ). Promotes invasive migration through the activation of GPC6 expression and WNT5A signaling pathway (PubMed: <a href="#">21871017</a> ). Is involved in the negative regulation of chondrogenesis (PubMed: <a href="#">35789258</a> ). Recruited by AKAP5 to ORAI1 pore- forming subunit of CRAC channels in Ca(2+) signaling microdomains where store-operated Ca(2+) influx is coupled to calmodulin and calcineurin signaling and activation of NFAT-dependent transcriptional responses.
Cellular Location	Cytoplasm. Nucleus. Note=Cytoplasmic for the phosphorylated form and nuclear after activation that is controlled by calcineurin-mediated dephosphorylation. Rapid nuclear exit of NFATC is thought to be one

mechanism by which cells distinguish between sustained and transient calcium signals. The subcellular localization of NFATC plays a key role in the regulation of gene transcription

#### Tissue Location

Expressed in thymus, spleen, heart, testis, brain, placenta, muscle and pancreas. Isoform 1 is highly expressed in the small intestine, heart, testis, prostate, thymus, placenta and thyroid Isoform 3 is highly expressed in stomach, uterus, placenta, trachea and thyroid.

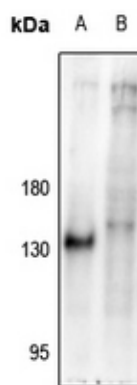
## Background

---

KLH-conjugated synthetic peptide encompassing a sequence within the center region of human NFAT1 (pS326). The exact sequence is proprietary.

## Images

---



Western blot analysis of NFAT1 (pS326) expression in Jurkat (A), Myla2059 (B) whole cell lysates.

Please note: All products are 'FOR RESEARCH USE ONLY. NOT FOR USE IN DIAGNOSTIC OR THERAPEUTIC PROCEDURES'.