

# Anti-L1CAM (pS1181) Antibody

Rabbit polyclonal antibody to L1CAM (pS1181)

Catalog # AP61156

## Product Information

Application	WB, IHC
Primary Accession	<a href="#">P32004</a>
Other Accession	<a href="#">P11627</a>
Reactivity	Human, Mouse, Rat, Zebrafish
Host	Rabbit
Clonality	Polyclonal
Calculated MW	140003

## Additional Information

Gene ID	3897
Other Names	CAML1; MIC5; Neural cell adhesion molecule L1; N-CAM-L1; NCAM-L1; CD171
Target/Specificity	KLH-conjugated synthetic peptide encompassing a sequence within the C-term region of human L1CAM (pS1181). The exact sequence is proprietary.
Dilution	WB~~WB (1/500 - 1/1000), IHC (1/50 - 1/200) IHC~~WB (1/500 - 1/1000), IHC (1/50 - 1/200)
Format	Liquid in 0.42% Potassium phosphate, 0.87% Sodium chloride, pH 7.3, 30% glycerol, and 0.09% (W/V) sodium azide.
Storage	Store at -20 °C.Stable for 12 months from date of receipt

## Protein Information

Name	L1CAM
Synonyms	CAML1, MIC5
Function	Neural cell adhesion molecule involved in the dynamics of cell adhesion and in the generation of transmembrane signals at tyrosine kinase receptors. During brain development, critical in multiple processes, including neuronal migration, axonal growth and fasciculation, and synaptogenesis. In the mature brain, plays a role in the dynamics of neuronal structure and function, including synaptic plasticity.
Cellular Location	Cell membrane; Single-pass type I membrane protein {ECO:0000250 UniProtKB:Q05695}. Cell projection, growth cone {ECO:0000250 UniProtKB:Q05695}. Cell projection, axon. Cell projection, dendrite Note=Colocalized with SHTN1 in close apposition with actin

filaments in filopodia and lamellipodia of axonal growth cones of hippocampal neurons (By similarity). In neurons, detected predominantly in axons and cell body, weak localization to dendrites (PubMed:20621658) {ECO:0000250|UniProtKB:Q05695, ECO:0000269|PubMed:20621658}

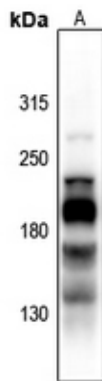
## Background

---

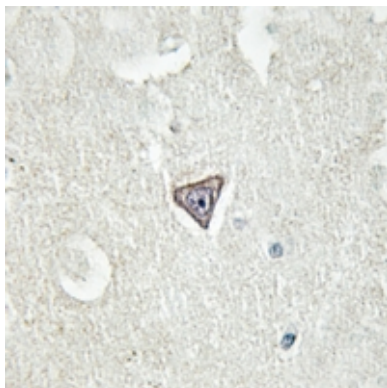
KLH-conjugated synthetic peptide encompassing a sequence within the C-term region of human L1CAM (pS1181). The exact sequence is proprietary.

## Images

---



Western blot analysis of L1CAM (pS1181) expression in Myla2059 (A) whole cell lysates.



Immunohistochemical analysis of L1CAM (pS1181) staining in human brain formalin fixed paraffin embedded tissue section. The section was pre-treated using heat mediated antigen retrieval with sodium citrate buffer (pH 6.0). The section was then incubated with the antibody at room temperature and detected using an HRP conjugated compact polymer system. DAB was used as the chromogen. The section was then counterstained with haematoxylin and mounted with DPX.

Please note: All products are 'FOR RESEARCH USE ONLY. NOT FOR USE IN DIAGNOSTIC OR THERAPEUTIC PROCEDURES'.