

Anti-CD50 (pS518) Antibody

Rabbit polyclonal antibody to CD50 (pS518)
Catalog # AP61158

Product Information

Application	WB
Primary Accession	P32942
Reactivity	Human
Host	Rabbit
Clonality	Polyclonal
Calculated MW	59541

Additional Information

Gene ID	3385
Other Names	Intercellular adhesion molecule 3; ICAM-3; CDw50; ICAM-R; CD50
Target/Specificity	KLH-conjugated synthetic peptide encompassing a sequence within the C-term region of human CD50 (pS518). The exact sequence is proprietary.
Dilution	WB--WB (1/500 - 1/1000)
Format	Liquid in 0.42% Potassium phosphate, 0.87% Sodium chloride, pH 7.3, 30% glycerol, and 0.09% (W/V) sodium azide.
Storage	Store at -20 °C. Stable for 12 months from date of receipt

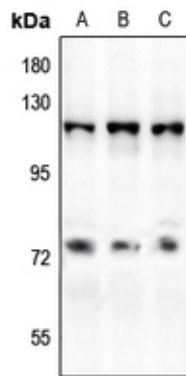
Protein Information

Name	ICAM3
Function	ICAM proteins are ligands for the leukocyte adhesion protein LFA-1 (integrin alpha-L/beta-2) (PubMed: 1448173). ICAM3 is also a ligand for integrin alpha-D/beta-2. In association with integrin alpha- L/beta-2, contributes to apoptotic neutrophil phagocytosis by macrophages (PubMed: 23775590).
Cellular Location	Membrane; Single-pass type I membrane protein.
Tissue Location	Leukocytes.

Background

KLH-conjugated synthetic peptide encompassing a sequence within the C-term region of human CD50 (pS518). The exact sequence is proprietary.

Images



Western blot analysis of CD50 (pS518) expression in A375 (A), Jurkat (B), Myla2059 (C) whole cell lysates.

Please note: All products are 'FOR RESEARCH USE ONLY. NOT FOR USE IN DIAGNOSTIC OR THERAPEUTIC PROCEDURES'.