

Anti-Topoisomerase 2 alpha (pS1106) Antibody

Rabbit polyclonal antibody to Topoisomerase 2 alpha (pS1106)

Catalog # AP61172

Product Information

Application	WB, IHC
Primary Accession	P11388
Other Accession	Q01320
Reactivity	Human, Mouse, Rat, Pig
Host	Rabbit
Clonality	Polyclonal
Calculated MW	174385

Additional Information

Gene ID	7153
Other Names	TOP2; DNA topoisomerase 2-alpha; DNA topoisomerase II alpha isozyme
Target/Specificity	Recognizes endogenous levels of Topoisomerase 2 alpha (pS1106) protein.
Dilution	WB~~WB (1/500 - 1/1000), IHC (1/50 - 1/200) IHC~~WB (1/500 - 1/1000), IHC (1/50 - 1/200)
Format	Liquid in 0.42% Potassium phosphate, 0.87% Sodium chloride, pH 7.3, 30% glycerol, and 0.09% (W/V) sodium azide.
Storage	Store at -20 °C.Stable for 12 months from date of receipt

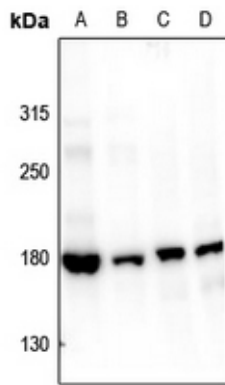
Protein Information

Name	TOP2A
Synonyms	TOP2
Function	Key decatenating enzyme that alters DNA topology by binding to two double-stranded DNA molecules, generating a double-stranded break in one of the strands, passing the intact strand through the broken strand, and religating the broken strand (PubMed: 17567603 , PubMed: 18790802 , PubMed: 22013166 , PubMed: 22323612). May play a role in regulating the period length of BMAL1 transcriptional oscillation (By similarity).
Cellular Location	Cytoplasm. Nucleus, nucleoplasm. Nucleus. Nucleus, nucleolus
Tissue Location	Expressed in the tonsil, spleen, lymph node, thymus, skin, pancreas, testis, colon, kidney, liver, brain and lung (PubMed:9155056). Also found in high-grade lymphomas, squamous cell lung tumors and seminomas

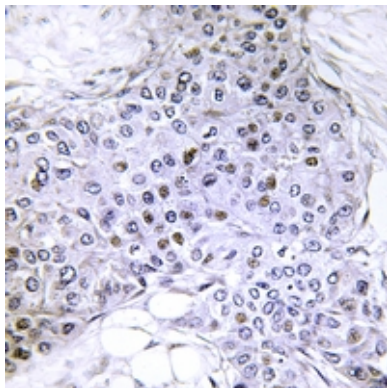
Background

KLH-conjugated synthetic peptide encompassing a sequence within the center region of human Topoisomerase 2 alpha (pS1106). The exact sequence is proprietary.

Images



Western blot analysis of Topoisomerase 2 alpha (pS1106) expression in Myla2059 (A), HuT78 (B), mouse testis (C), rat testis (D) whole cell lysates.



Immunohistochemical analysis of Topoisomerase 2 alpha (pS1106) staining in human breast cancer formalin fixed paraffin embedded tissue section. The section was pre-treated using heat mediated antigen retrieval with sodium citrate buffer (pH 6.0). The section was then incubated with the antibody at room temperature and detected using an HRP conjugated compact polymer system. DAB was used as the chromogen. The section was then counterstained with haematoxylin and mounted with DPX.

Please note: All products are 'FOR RESEARCH USE ONLY. NOT FOR USE IN DIAGNOSTIC OR THERAPEUTIC PROCEDURES'.