

Anti-Alpha-synuclein (pY136) Antibody

Rabbit polyclonal antibody to Alpha-synuclein (pY136)

Catalog # AP61177

Product Information

Application	WB
Primary Accession	P37840
Other Accession	O55042
Reactivity	Human, Mouse, Rat, Monkey, Pig
Host	Rabbit
Clonality	Polyclonal

Additional Information

Other Names	NACP; PARK1; Alpha-synuclein; Non-A beta component of AD amyloid; Non-A4 component of amyloid precursor; NACP
Target/Specificity	KLH-conjugated synthetic peptide encompassing a sequence within the C-term region of human Alpha-synuclein (pY136). The exact sequence is proprietary.
Dilution	WB--WB (1/500 - 1/1000)
Format	Liquid in 0.42% Potassium phosphate, 0.87% Sodium chloride, pH 7.3, 30% glycerol, and 0.09% (W/V) sodium azide.
Storage	Store at -20 °C. Stable for 12 months from date of receipt

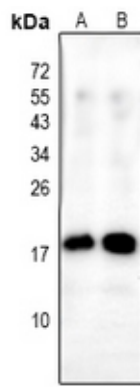
Protein Information

Background

KLH-conjugated synthetic peptide encompassing a sequence within the C-term region of human Alpha-synuclein (pY136). The exact sequence is proprietary.

Images

Western blot analysis of Alpha-synuclein (pY136) expression in mouse brain (A), rat brain (B) whole cell lysates.



Please note: All products are 'FOR RESEARCH USE ONLY. NOT FOR USE IN DIAGNOSTIC OR THERAPEUTIC PROCEDURES'.