

Anti-CREB (pS111) Antibody

Rabbit polyclonal antibody to CREB (pS111)

Catalog # AP61179

Product Information

Application	WB
Primary Accession	P16220
Other Accession	Q01147
Reactivity	Human, Mouse, Rat
Host	Rabbit
Clonality	Polyclonal
Calculated MW	35136

Additional Information

Gene ID	1385
Other Names	Cyclic AMP-responsive element-binding protein 1; CREB-1; cAMP-responsive element-binding protein 1
Target/Specificity	Recognizes endogenous levels of CREB (pS111) protein.
Dilution	WB~~WB (1/500 - 1/1000)
Format	Liquid in 0.42% Potassium phosphate, 0.87% Sodium chloride, pH 7.3, 30% glycerol, and 0.09% (W/V) sodium azide.
Storage	Store at -20 °C.Stable for 12 months from date of receipt

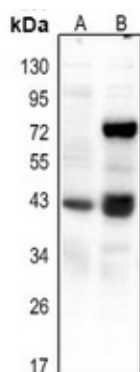
Protein Information

Name	CREB1
Function	Phosphorylation-dependent transcription factor that stimulates transcription upon binding to the DNA cAMP response element (CRE), a sequence present in many viral and cellular promoters (By similarity). Transcription activation is enhanced by the TORC coactivators which act independently of Ser-119 phosphorylation (PubMed: 14536081). Involved in different cellular processes including the synchronization of circadian rhythmicity and the differentiation of adipose cells (By similarity). Regulates the expression of apoptotic and inflammatory response factors in cardiomyocytes in response to ERFE-mediated activation of AKT signaling (By similarity).
Cellular Location	Nucleus {ECO:0000255 PROSITE-ProRule:PRU00312, ECO:0000255 PROSITE-ProRule:PRU00978, ECO:0000269 PubMed:12552083}

Background

KLH-conjugated synthetic peptide encompassing a sequence within the center region of human CREB (pS111). The exact sequence is proprietary.

Images



Western blot analysis of CREB (pS111) expression in mouse kidney (A), rat kidney (B) whole cell lysates.

Please note: All products are 'FOR RESEARCH USE ONLY. NOT FOR USE IN DIAGNOSTIC OR THERAPEUTIC PROCEDURES'.