

Anti-Catalase Antibody

Rabbit polyclonal antibody to Catalase

Catalog # AP61186

Product Information

| | |
|-------------------|--|
| Application | WB, IHC |
| Primary Accession | P04040 |
| Other Accession | P24270 |
| Reactivity | Human, Mouse, Rat, Zebrafish, Bovine, Drosophila |
| Host | Rabbit |
| Clonality | Polyclonal |
| Calculated MW | 59756 |

Additional Information

| | |
|--------------------|---|
| Gene ID | 847 |
| Other Names | Catalase |
| Target/Specificity | Recognizes endogenous levels of Catalase protein. |
| Dilution | WB~~WB (1/500 - 1/1000), IHC (1/50 - 1/200) IHC~~WB (1/500 - 1/1000), IHC (1/50 - 1/200) |
| Format | Liquid in 0.42% Potassium phosphate, 0.87% Sodium chloride, pH 7.3, 30% glycerol, and 0.09% (W/V) sodium azide. |
| Storage | Store at -20 °C.Stable for 12 months from date of receipt |

Protein Information

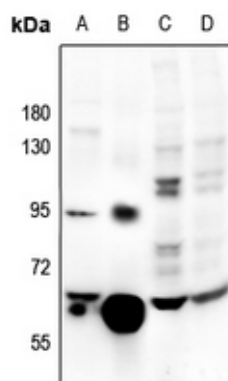
| | |
|-------------------|--|
| Name | CAT |
| Function | Catalyzes the degradation of hydrogen peroxide (H ₂ O ₂) generated by peroxisomal oxidases to water and oxygen, thereby protecting cells from the toxic effects of hydrogen peroxide (PubMed: 7882369). Promotes growth of cells including T-cells, B-cells, myeloid leukemia cells, melanoma cells, mastocytoma cells and normal and transformed fibroblast cells (PubMed: 7882369). |
| Cellular Location | Peroxisome matrix |

Background

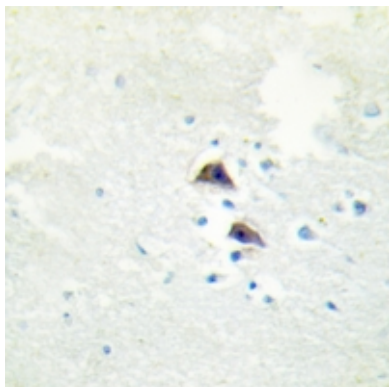
KLH-conjugated synthetic peptide encompassing a sequence within the center region of human Catalase.

The exact sequence is proprietary.

Images



Western blot analysis of Catalase expression in rat prostate (A), mouse kidney (B), A549 (C), LO2 (D) whole cell lysates.



Immunohistochemical analysis of Catalase staining in human brain formalin fixed paraffin embedded tissue section. The section was pre-treated using heat mediated antigen retrieval with sodium citrate buffer (pH 6.0). The section was then incubated with the antibody at room temperature and detected using an HRP conjugated compact polymer system. DAB was used as the chromogen. The section was then counterstained with haematoxylin and mounted with DPX.

Please note: All products are 'FOR RESEARCH USE ONLY. NOT FOR USE IN DIAGNOSTIC OR THERAPEUTIC PROCEDURES'.