

# Anti-p19 INK4d Antibody

Rabbit polyclonal antibody to p19 INK4d  
Catalog # AP61196

## Product Information

---

<b>Application</b>	WB, IHC
<b>Primary Accession</b>	<a href="#">P55273</a>
<b>Reactivity</b>	Human, Monkey
<b>Host</b>	Rabbit
<b>Clonality</b>	Polyclonal
<b>Calculated MW</b>	17700

## Additional Information

---

<b>Gene ID</b>	1032
<b>Other Names</b>	Cyclin-dependent kinase 4 inhibitor D; p19-INK4d
<b>Target/Specificity</b>	Recognizes endogenous levels of p19 INK4d protein.
<b>Dilution</b>	WB~~WB (1/500 - 1/1000), IHC (1/50 - 1/200) IHC~~WB (1/500 - 1/1000), IHC (1/50 - 1/200)
<b>Format</b>	Liquid in 0.42% Potassium phosphate, 0.87% Sodium chloride, pH 7.3, 30% glycerol, and 0.09% (W/V) sodium azide.
<b>Storage</b>	Store at -20 °C.Stable for 12 months from date of receipt

## Protein Information

---

<b>Name</b>	CDKN2D
<b>Function</b>	Interacts strongly with CDK4 and CDK6 and inhibits them.
<b>Cellular Location</b>	Nucleus. Cytoplasm

## Background

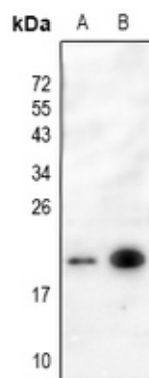
---

KLH-conjugated synthetic peptide encompassing a sequence within the center region of human p19 INK4d. The exact sequence is proprietary.

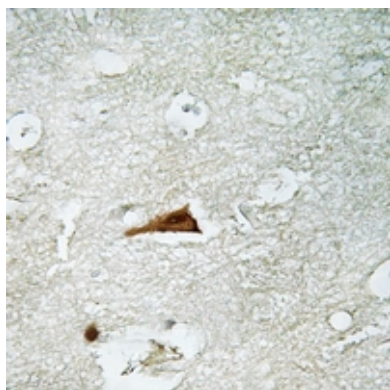
## Images

---

Western blot analysis of p19 INK4d expression in



Myla2059 (A), K562 (B) whole cell lysates.



Immunohistochemical analysis of p19 INK4d staining in human brain formalin fixed paraffin embedded tissue section. The section was pre-treated using heat mediated antigen retrieval with sodium citrate buffer (pH 6.0). The section was then incubated with the antibody at room temperature and detected using an HRP conjugated compact polymer system. DAB was used as the chromogen. The section was then counterstained with haematoxylin and mounted with DPX.

Please note: All products are 'FOR RESEARCH USE ONLY. NOT FOR USE IN DIAGNOSTIC OR THERAPEUTIC PROCEDURES'.