

Anti-ZNF225 Antibody

Rabbit polyclonal antibody to ZNF225

Catalog # AP61197

Product Information

Application	WB, IHC
Primary Accession	Q9UK10
Reactivity	Human, Rat
Host	Rabbit
Clonality	Polyclonal
Calculated MW	82471

Additional Information

Gene ID	7768
Other Names	Zinc finger protein 225
Target/Specificity	Recognizes endogenous levels of ZNF225 protein.
Dilution	WB~~WB (1/500 - 1/1000), IHC (1/50 - 1/200) IHC~~WB (1/500 - 1/1000), IHC (1/50 - 1/200)
Format	Liquid in 0.42% Potassium phosphate, 0.87% Sodium chloride, pH 7.3, 30% glycerol, and 0.09% (W/V) sodium azide.
Storage	Store at -20 °C.Stable for 12 months from date of receipt

Protein Information

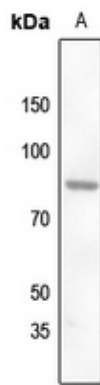
Name	ZNF225
Function	May be involved in transcriptional regulation.
Cellular Location	Nucleus.

Background

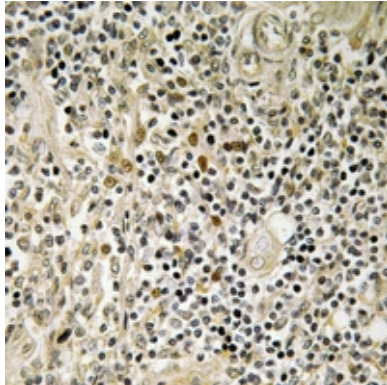
KLH-conjugated synthetic peptide encompassing a sequence within the C-term region of human ZNF225. The exact sequence is proprietary.

Images

Western blot analysis of ZNF225 expression in rat kidney



(A) whole cell lysates.



Immunohistochemical analysis of ZNF225 staining in human thymus gland formalin fixed paraffin embedded tissue section. The section was pre-treated using heat mediated antigen retrieval with sodium citrate buffer (pH 6.0). The section was then incubated with the antibody at room temperature and detected using an HRP conjugated compact polymer system. DAB was used as the chromogen. The section was then counterstained with haematoxylin and mounted with DPX.

Please note: All products are 'FOR RESEARCH USE ONLY. NOT FOR USE IN DIAGNOSTIC OR THERAPEUTIC PROCEDURES'.