

Anti-PHLDA1 Antibody

Rabbit polyclonal antibody to PHLDA1

Catalog # AP61203

Product Information

Application	WB
Primary Accession	Q8WV24
Other Accession	Q62392
Reactivity	Human, Mouse, Rat, Bovine
Host	Rabbit
Clonality	Polyclonal
Calculated MW	45016

Additional Information

Gene ID	22822
Other Names	PHRIP; TDAG51; Pleckstrin homology-like domain family A member 1; Apoptosis-associated nuclear protein; Proline- and glutamine-rich protein; PQ-rich protein; PQR protein; Proline- and histidine-rich protein; T-cell death-associated gene 51 protein
Target/Specificity	KLH-conjugated synthetic peptide encompassing a sequence within the C-term region of human PHLDA1. The exact sequence is proprietary.
Dilution	WB~~WB (1/500 - 1/1000)
Format	Liquid in 0.42% Potassium phosphate, 0.87% Sodium chloride, pH 7.3, 30% glycerol, and 0.09% (W/V) sodium azide.
Storage	Store at -20 °C.Stable for 12 months from date of receipt

Protein Information

Name	PHLDA1
Synonyms	PHRIP, TDAG51
Function	Seems to be involved in regulation of apoptosis. May be involved in detachment-mediated programmed cell death. May mediate apoptosis during neuronal development. May be involved in regulation of anti-apoptotic effects of IGF1. May be involved in translational regulation.
Cellular Location	Cytoplasm. Cytoplasmic vesicle. Nucleus, nucleolus. Note=Colocalizes with intracellular vesicles. Widely expressed with highest levels in pancreas. Strongly expressed by

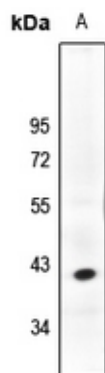
Tissue Location

benign melanocytic nevi, and progressively reduced expressed in primary and metastatic melanomas (at protein level).

Background

KLH-conjugated synthetic peptide encompassing a sequence within the C-term region of human PHLDA1. The exact sequence is proprietary.

Images



Western blot analysis of PHLDA1 expression in C6 (A) whole cell lysates.

Please note: All products are 'FOR RESEARCH USE ONLY. NOT FOR USE IN DIAGNOSTIC OR THERAPEUTIC PROCEDURES'.