

Anti-RAD23A Antibody

Rabbit polyclonal antibody to RAD23A

Catalog # AP61204

Product Information

Application	WB, IF/IC
Primary Accession	P54725
Reactivity	Human, Rat, Monkey, Bovine
Host	Rabbit
Clonality	Polyclonal
Calculated MW	39609

Additional Information

Gene ID	5886
Other Names	UV excision repair protein RAD23 homolog A; HR23A; hHR23A
Target/Specificity	KLH-conjugated synthetic peptide encompassing a sequence within the center region of human RAD23A. The exact sequence is proprietary.
Dilution	WB~~WB (1/500 - 1/1000), IF/IC (1/100 - 1/500) IF/IC~~N/A
Format	Liquid in 0.42% Potassium phosphate, 0.87% Sodium chloride, pH 7.3, 30% glycerol, and 0.09% (W/V) sodium azide.
Storage	Store at -20 °C.Stable for 12 months from date of receipt

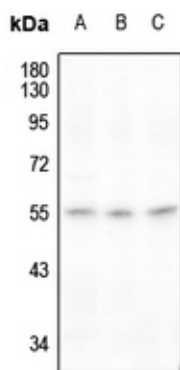
Protein Information

Name	RAD23A
Function	Multiubiquitin chain receptor involved in modulation of proteasomal degradation. Binds to 'Lys-48'-linked polyubiquitin chains in a length-dependent manner and with a lower affinity to 'Lys-63'- linked polyubiquitin chains. Proposed to be capable to bind simultaneously to the 26S proteasome and to polyubiquitinated substrates and to deliver ubiquitinated proteins to the proteasome. (Microbial infection) Involved in Vpr-dependent replication of HIV-1 in non-proliferating cells and primary macrophages. Required for the association of HIV-1 Vpr with the host proteasome.
Cellular Location	Nucleus.

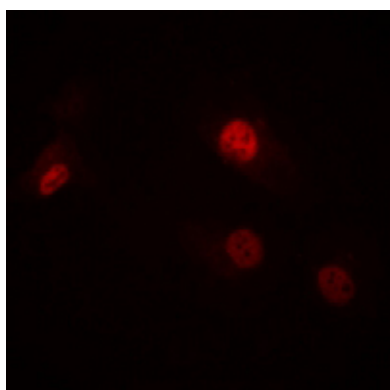
Background

KLH-conjugated synthetic peptide encompassing a sequence within the center region of human RAD23A. The exact sequence is proprietary.

Images



Western blot analysis of RAD23A expression in HeLa (A), HEK293T (B), rat testis (C) whole cell lysates.



Immunofluorescent analysis of RAD23A staining in A549 cells. Formalin-fixed cells were permeabilized with 0.1% Triton X-100 in TBS for 5-10 minutes and blocked with 3% BSA-PBS for 30 minutes at room temperature. Cells were probed with the primary antibody in 3% BSA-PBS and incubated overnight at 4 °C in a humidified chamber. Cells were washed with PBST and incubated with a Alexa Fluor 594-conjugated secondary antibody (red) in PBS at room temperature in the dark.

Please note: All products are 'FOR RESEARCH USE ONLY. NOT FOR USE IN DIAGNOSTIC OR THERAPEUTIC PROCEDURES'.