

Anti-RPS27L Antibody

Rabbit polyclonal antibody to RPS27L

Catalog # AP61205

Product Information

Application	WB, IHC
Primary Accession	Q71UM5
Other Accession	Q6ZWy3
Reactivity	Human, Mouse, Rat, Monkey
Host	Rabbit
Clonality	Polyclonal
Calculated MW	9477

Additional Information

Gene ID	51065
Other Names	40S ribosomal protein S27-like
Target/Specificity	Recognizes endogenous levels of RPS27L protein.
Dilution	WB~~WB (1/500 - 1/1000), IHC (1/50 - 1/200) IHC~~WB (1/500 - 1/1000), IHC (1/50 - 1/200)
Format	Liquid in 0.42% Potassium phosphate, 0.87% Sodium chloride, pH 7.3, 30% glycerol, and 0.09% (W/V) sodium azide.
Storage	Store at -20 °C.Stable for 12 months from date of receipt

Protein Information

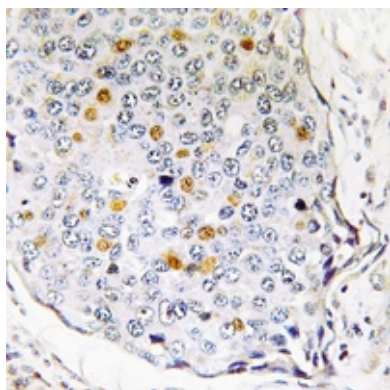
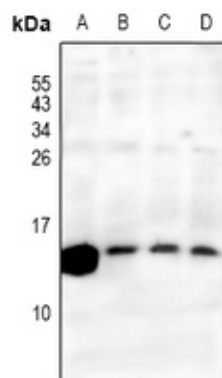
Name	RPS27L (HGNC:18476)
------	---------------------------------------

Background

KLH-conjugated synthetic peptide encompassing a sequence within the N-term region of human RPS27L. The exact sequence is proprietary.

Images

Western blot analysis of RPS27L expression in mouse kidney (A), rat kidney (B), A549 (C), H1792 (D) whole cell lysates.



Immunohistochemical analysis of RPS27L staining in human breast cancer formalin fixed paraffin embedded tissue section. The section was pre-treated using heat mediated antigen retrieval with sodium citrate buffer (pH 6.0). The section was then incubated with the antibody at room temperature and detected using an HRP conjugated compact polymer system. DAB was used as the chromogen. The section was then counterstained with haematoxylin and mounted with DPX.

Please note: All products are 'FOR RESEARCH USE ONLY. NOT FOR USE IN DIAGNOSTIC OR THERAPEUTIC PROCEDURES'.