

# Anti-RPL31 Antibody

Rabbit polyclonal antibody to RPL31

Catalog # AP61206

## Product Information

---

|                          |                                |
|--------------------------|--------------------------------|
| <b>Application</b>       | WB, IHC                        |
| <b>Primary Accession</b> | <a href="#">P62899</a>         |
| <b>Other Accession</b>   | <a href="#">P62900</a>         |
| <b>Reactivity</b>        | Human, Mouse, Rat, Pig, Bovine |
| <b>Host</b>              | Rabbit                         |
| <b>Clonality</b>         | Polyclonal                     |
| <b>Calculated MW</b>     | 14463                          |

## Additional Information

---

|                           |   |
|---------------------------|---|
| <b>Gene ID</b>            | 6160  |
| <b>Other Names</b>        | 60S ribosomal protein L31   |
| <b>Target/Specificity</b> | Recognizes endogenous levels of RPL31 protein.  |
| <b>Dilution</b>           | WB~~WB (1/500 - 1/1000), IHC (1/50 - 1/200) IHC~~WB (1/500 - 1/1000), IHC (1/50 - 1/200)                        |
| <b>Format</b>             | Liquid in 0.42% Potassium phosphate, 0.87% Sodium chloride, pH 7.3, 30% glycerol, and 0.09% (W/V) sodium azide. |
| <b>Storage</b>            | Store at -20 °C.Stable for 12 months from date of receipt   |

## Protein Information

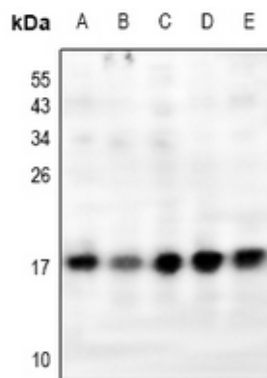
---

|                          |  |
|--------------------------|--|
| <b>Name</b>              | RPL31  |
| <b>Function</b>          | Component of the large ribosomal subunit (PubMed: <a href="#">23636399</a> , PubMed: <a href="#">32669547</a> ). The ribosome is a large ribonucleoprotein complex responsible for the synthesis of proteins in the cell (PubMed: <a href="#">23636399</a> , PubMed: <a href="#">32669547</a> ). |
| <b>Cellular Location</b> | Cytoplasm.   |

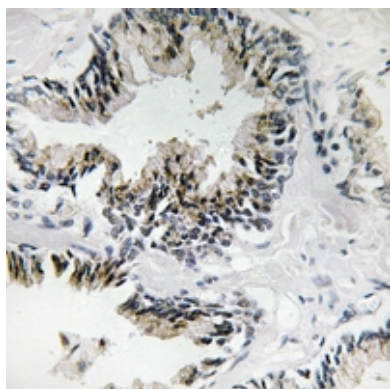
## Background

---

KLH-conjugated synthetic peptide encompassing a sequence within the center region of human RPL31. The exact sequence is proprietary.



Western blot analysis of RPL31 expression in A375 (A), MCF7 (B), HCT116 (C), CT26 (D), C6 (E) whole cell lysates.



Immunohistochemical analysis of RPL31 staining in human prostate cancer formalin fixed paraffin embedded tissue section. The section was pre-treated using heat mediated antigen retrieval with sodium citrate buffer (pH 6.0). The section was then incubated with the antibody at room temperature and detected using an HRP conjugated compact polymer system. DAB was used as the chromogen. The section was then counterstained with haematoxylin and mounted with DPX.

Please note: All products are 'FOR RESEARCH USE ONLY. NOT FOR USE IN DIAGNOSTIC OR THERAPEUTIC PROCEDURES'.