

# Anti-POLR2J Antibody

Rabbit polyclonal antibody to POLR2J

Catalog # AP61211

## Product Information

---

<b>Application</b>	WB
<b>Primary Accession</b>	<a href="#">P52435</a>
<b>Other Accession</b>	<a href="#">O08740</a>
<b>Reactivity</b>	Human, Mouse, Rat, Bovine
<b>Host</b>	Rabbit
<b>Clonality</b>	Polyclonal
<b>Calculated MW</b>	13293

## Additional Information

---

<b>Gene ID</b>	5439
<b>Other Names</b>	POLR2J1; DNA-directed RNA polymerase II subunit RPB11-a; RNA polymerase II subunit B11-a; RPB11a; DNA-directed RNA polymerase II subunit J-1; RNA polymerase II 13.3 kDa subunit
<b>Target/Specificity</b>	Recognizes endogenous levels of POLR2J protein.
<b>Dilution</b>	WB~~WB (1/500 - 1/1000)
<b>Format</b>	Liquid in 0.42% Potassium phosphate, 0.87% Sodium chloride, pH 7.3, 30% glycerol, and 0.09% (W/V) sodium azide.
<b>Storage</b>	Store at -20 °C.Stable for 12 months from date of receipt

## Protein Information

---

<b>Name</b>	POLR2J
<b>Synonyms</b>	POLR2J1
<b>Function</b>	Core component of RNA polymerase II (Pol II), a DNA-dependent RNA polymerase which synthesizes mRNA precursors and many functional non-coding RNAs using the four ribonucleoside triphosphates as substrates.
<b>Cellular Location</b>	Nucleus.
<b>Tissue Location</b>	Ubiquitously expressed. High expression was found in heart and skeletal muscle.

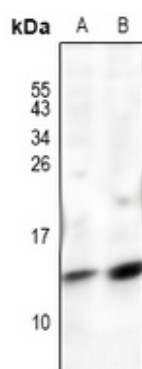
## Background

---

KLH-conjugated synthetic peptide encompassing a sequence within the N-term region of human POLR2J. The exact sequence is proprietary.

## Images

---



Western blot analysis of POLR2J expression in CT26 (A), PC12 (B) whole cell lysates.

Please note: All products are 'FOR RESEARCH USE ONLY. NOT FOR USE IN DIAGNOSTIC OR THERAPEUTIC PROCEDURES'.