

Anti-Dynein HC Antibody

Rabbit polyclonal antibody to Dynein HC
Catalog # AP61212

Product Information

Application	WB
Primary Accession	Q14204
Other Accession	Q9JHU4
Reactivity	Human, Mouse, Rat
Host	Rabbit
Clonality	Polyclonal
Calculated MW	532408

Additional Information

Gene ID	1778
Other Names	DHC1; DNCH1; DNCL; DNECL; DYHC; KIAA0325; Cytoplasmic dynein 1 heavy chain 1; Cytoplasmic dynein heavy chain 1; Dynein heavy chain cytosolic
Target/Specificity	Recognizes endogenous levels of Dynein HC protein.
Dilution	WB~~WB (1/500 - 1/1000)
Format	Liquid in 0.42% Potassium phosphate, 0.87% Sodium chloride, pH 7.3, 30% glycerol, and 0.09% (W/V) sodium azide.
Storage	Store at -20 °C.Stable for 12 months from date of receipt

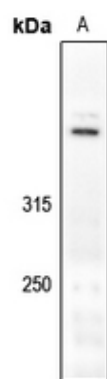
Protein Information

Name	DYNC1H1 (HGNC:2961)
Function	Cytoplasmic dynein 1 acts as a motor for the intracellular retrograde motility of vesicles and organelles along microtubules. Dynein has ATPase activity; the force-producing power stroke is thought to occur on release of ADP. Plays a role in mitotic spindle assembly and metaphase plate congression (PubMed: 27462074).
Cellular Location	Cytoplasm, cytoskeleton

Background

KLH-conjugated synthetic peptide encompassing a sequence within the center region of human Dynein HC. The exact sequence is proprietary.

Images



Western blot analysis of Dynein HC expression in HCT116 (A) whole cell lysates.

Please note: All products are 'FOR RESEARCH USE ONLY. NOT FOR USE IN DIAGNOSTIC OR THERAPEUTIC PROCEDURES'.