

# Anti-LRP1B Antibody

Rabbit polyclonal antibody to LRP1B  
Catalog # AP61216

## Product Information

---

Application	WB
Primary Accession	<a href="#">Q9NZR2</a>
Other Accession	<a href="#">Q9JI18</a>
Reactivity	Human, Mouse, Rat
Host	Rabbit
Clonality	Polyclonal
Calculated MW	515498

## Additional Information

---

Gene ID	53353
Other Names	LRPDIT; Low-density lipoprotein receptor-related protein 1B; LRP-1B; Low-density lipoprotein receptor-related protein-deleted in tumor; LRP-DIT
Target/Specificity	Recognizes endogenous levels of LRP1B protein.
Dilution	WB~~WB (1/500 - 1/1000)
Format	Liquid in 0.42% Potassium phosphate, 0.87% Sodium chloride, pH 7.3, 30% glycerol, and 0.09% (W/V) sodium azide.
Storage	Store at -20 °C.Stable for 12 months from date of receipt

## Protein Information

---

Name	LRP1B
Synonyms	LRPDIT
Function	Potential cell surface proteins that bind and internalize ligands in the process of receptor-mediated endocytosis.
Cellular Location	Membrane; Single-pass type I membrane protein
Tissue Location	Expressed in thyroid gland and in salivary gland, as well as in adult and fetal brain.

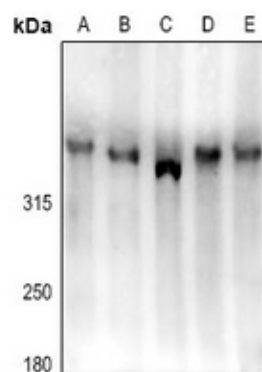
## Background

---

KLH-conjugated synthetic peptide encompassing a sequence within the N-term region of human LRP1B. The exact sequence is proprietary.

## Images

---



Western blot analysis of LRP1B expression in A375 (A), HeLa (B), H9C2 (C), NIH3T3 (D), K562 (E) whole cell lysates.

Please note: All products are 'FOR RESEARCH USE ONLY. NOT FOR USE IN DIAGNOSTIC OR THERAPEUTIC PROCEDURES'.