

Anti-CD208 Antibody

Rabbit polyclonal antibody to CD208

Catalog # AP61217

Product Information

Application	WB, IHC
Primary Accession	Q9UQV4
Other Accession	Q7TST5
Reactivity	Human, Mouse, Rat
Host	Rabbit
Clonality	Polyclonal
Calculated MW	44346

Additional Information

Gene ID	27074
Other Names	DCLAMP; TSC403; Lysosome-associated membrane glycoprotein 3; LAMP-3; Lysosomal-associated membrane protein 3; DC-lysosome-associated membrane glycoprotein; DC LAMP; Protein TSC403; CD208
Target/Specificity	Recognizes endogenous levels of CD208 protein.
Dilution	WB~~WB (1/500 - 1/1000), IHC (1/50 - 1/200) IHC~~WB (1/500 - 1/1000), IHC (1/50 - 1/200)
Format	Liquid in 0.42% Potassium phosphate, 0.87% Sodium chloride, pH 7.3, 30% glycerol, and 0.09% (W/V) sodium azide.
Storage	Store at -20 °C.Stable for 12 months from date of receipt

Protein Information

Name	LAMP3
Synonyms	DCLAMP, TSC403
Function	<p>Lysosomal membrane glycoprotein which plays a role in the unfolded protein response (UPR) that contributes to protein degradation and cell survival during proteasomal dysfunction (PubMed:25681212). Plays a role in the process of fusion of the lysosome with the autophagosome, thereby modulating the autophagic process (PubMed:24434718). Promotes hepatocellular lipogenesis through activation of the PI3K/Akt pathway (PubMed:29056532). May also play a role in dendritic cell function and in adaptive immunity (PubMed:9768752).</p> <p>Cell surface. Lysosome membrane; Single-pass type I membrane protein.</p>

Cellular Location

Cytoplasmic vesicle membrane; Single-pass type I membrane protein. Early endosome membrane; Single-pass type I membrane protein. Note=During dendritic cell maturation, detected on cytoplasmic vesicles (the MHC II compartment) that contain MHC II proteins, LAMP1, LAMP2 and LAMP3 (PubMed:9768752). Detected on lysosomes in mature dendritic cells (PubMed:9768752).

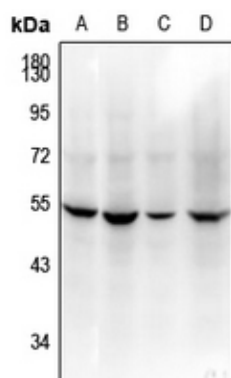
Tissue Location

Detected in tonsil interdigitating dendritic cells, in spleen, lymph node, Peyer's patches in the small intestine, in thymus medulla and in B-cells (at protein level). Expressed in lymphoid organs and dendritic cells. Expressed in lung. Up-regulated in carcinomas of the esophagus, colon, rectum, ureter, stomach, breast, fallopian tube, thyroid and parotid tissues

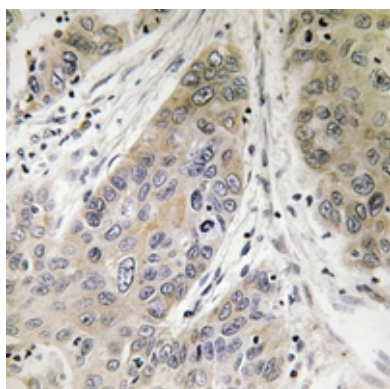
Background

KLH-conjugated synthetic peptide encompassing a sequence within the center region of human CD208. The exact sequence is proprietary.

Images



Western blot analysis of CD208 expression in PC3 (A), A2780 (B), PMVEC (C), Raw264.7 (D) whole cell lysates.



Immunohistochemical analysis of CD208 staining in human lung cancer formalin fixed paraffin embedded tissue section. The section was pre-treated using heat mediated antigen retrieval with sodium citrate buffer (pH 6.0). The section was then incubated with the antibody at room temperature and detected using an HRP conjugated compact polymer system. DAB was used as the chromogen. The section was then counterstained with haematoxylin and mounted with DPX.

Please note: All products are 'FOR RESEARCH USE ONLY. NOT FOR USE IN DIAGNOSTIC OR THERAPEUTIC PROCEDURES'.