

Anti-SSH3 Antibody

Rabbit polyclonal antibody to SSH3
Catalog # AP61221

Product Information

Application	WB, IHC
Primary Accession	Q8TE77
Other Accession	Q8K330
Reactivity	Human, Mouse, Rat
Host	Rabbit
Clonality	Polyclonal
Calculated MW	72996

Additional Information

Gene ID	54961
Other Names	SSH3L; Protein phosphatase Slingshot homolog 3; SSH-like protein 3; SSH-3L; hSSH-3L
Target/Specificity	Recognizes endogenous levels of SSH3 protein.
Dilution	WB~~WB (1/500 - 1/1000), IHC (1/50 - 1/200) IHC~~WB (1/500 - 1/1000), IHC (1/50 - 1/200)
Format	Liquid in 0.42% Potassium phosphate, 0.87% Sodium chloride, pH 7.3, 30% glycerol, and 0.09% (W/V) sodium azide.
Storage	Store at -20 °C.Stable for 12 months from date of receipt

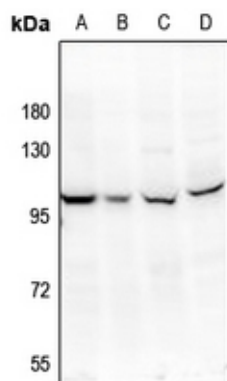
Protein Information

Name	SSH3
Synonyms	SSH3L
Function	Protein phosphatase which may play a role in the regulation of actin filament dynamics. Can dephosphorylate and activate the actin binding/depolymerizing factor cofilin, which subsequently binds to actin filaments and stimulates their disassembly (By similarity).
Cellular Location	Cytoplasm, cytoskeleton. Nucleus

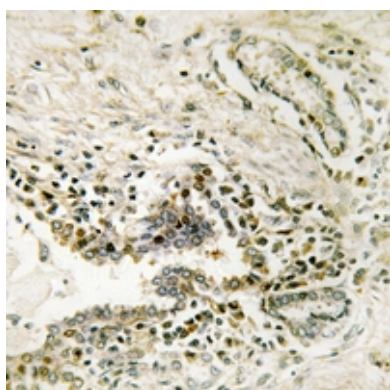
Background

KLH-conjugated synthetic peptide encompassing a sequence within the center region of human SSH3. The exact sequence is proprietary.

Images



Western blot analysis of SSH3 expression in HepG2 (A), MCF7 (B), PC12 (C), AML12 (D) whole cell lysates.



Immunohistochemical analysis of SSH3 staining in human lung cancer formalin fixed paraffin embedded tissue section. The section was pre-treated using heat mediated antigen retrieval with sodium citrate buffer (pH 6.0). The section was then incubated with the antibody at room temperature and detected using an HRP conjugated compact polymer system. DAB was used as the chromogen. The section was then counterstained with haematoxylin and mounted with DPX.

Please note: All products are 'FOR RESEARCH USE ONLY. NOT FOR USE IN DIAGNOSTIC OR THERAPEUTIC PROCEDURES'.