

# Anti-ZNF691 Antibody

Rabbit polyclonal antibody to ZNF691  
Catalog # AP61226

## Product Information

---

Application	WB
Primary Accession	<a href="#">Q5VV52</a>
Other Accession	<a href="#">Q3TDE8</a>
Reactivity	Human, Mouse, Rat
Host	Rabbit
Clonality	Polyclonal
Calculated MW	35810

## Additional Information

---

Gene ID	51058
Other Names	Zinc finger protein 691
Target/Specificity	Recognizes endogenous levels of ZNF691 protein.
Dilution	WB~~WB (1/500 - 1/1000)
Format	Liquid in 0.42% Potassium phosphate, 0.87% Sodium chloride, pH 7.3, 30% glycerol, and 0.09% (W/V) sodium azide.
Storage	Store at -20 °C.Stable for 12 months from date of receipt

## Protein Information

---

Name	ZNF691
Function	May be involved in transcriptional regulation.
Cellular Location	Nucleus.

## Background

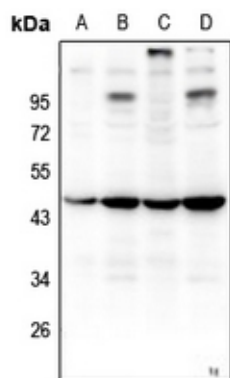
---

KLH-conjugated synthetic peptide encompassing a sequence within the center region of human ZNF691. The exact sequence is proprietary.

## Images

---

Western blot analysis of ZNF691 expression in MCF7 (A),



HepG2 (B), PC12 (C), MEF (D) whole cell lysates.

Please note: All products are 'FOR RESEARCH USE ONLY. NOT FOR USE IN DIAGNOSTIC OR THERAPEUTIC PROCEDURES'.