

Anti-SUMO2 Antibody

Rabbit polyclonal antibody to SUMO2

Catalog # AP61228

Product Information

Application	WB
Primary Accession	P61956
Other Accession	P61957
Reactivity	Human, Mouse, Rat, Monkey, Pig
Host	Rabbit
Clonality	Polyclonal
Calculated MW	10871

Additional Information

Gene ID	6613
Other Names	SMT3A; SMT3H2; Small ubiquitin-related modifier 2; SUMO-2; HSMT3; SMT3 homolog 2; SUMO-3; Sentrin-2; Ubiquitin-like protein SMT3A; Smt3A
Target/Specificity	KLH-conjugated synthetic peptide encompassing a sequence within the N-term region of human SUMO2. The exact sequence is proprietary.
Dilution	WB~~WB (1/500 - 1/1000)
Format	Liquid in 0.42% Potassium phosphate, 0.87% Sodium chloride, pH 7.3, 30% glycerol, and 0.09% (W/V) sodium azide.
Storage	Store at -20 °C.Stable for 12 months from date of receipt

Protein Information

Name	SUMO2 (HGNC:11125)
Function	Ubiquitin-like protein that can be covalently attached to proteins as a monomer or as a lysine-linked polymer. Covalent attachment via an isopeptide bond to its substrates requires prior activation by the E1 complex SAE1-SAE2 and linkage to the E2 enzyme UBE2I, and can be promoted by an E3 ligase such as PIAS1-4, RANBP2, CBX4 or ZNF451 (PubMed: 26524494). This post-translational modification on lysine residues of proteins plays a crucial role in a number of cellular processes such as nuclear transport, DNA replication and repair, mitosis and signal transduction. Polymeric SUMO2 chains are also susceptible to polyubiquitination which functions as a signal for proteasomal degradation of modified proteins (PubMed: 18408734 , PubMed: 18538659 , PubMed: 21965678 , PubMed: 9556629). Plays a role in the regulation of sumoylation status of SETX (PubMed: 24105744).

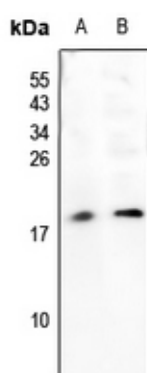
Cellular Location Nucleus. Nucleus, PML body.

Tissue Location Broadly expressed..

Background

KLH-conjugated synthetic peptide encompassing a sequence within the N-term region of human SUMO2. The exact sequence is proprietary.

Images



Western blot analysis of SUMO2 expression in MCF7 (A), rat kidney (B) whole cell lysates.

Please note: All products are 'FOR RESEARCH USE ONLY. NOT FOR USE IN DIAGNOSTIC OR THERAPEUTIC PROCEDURES'.