

Anti-Factor VII Antibody

Rabbit polyclonal antibody to Factor VII
Catalog # AP61229

Product Information

Application	WB
Primary Accession	P08709
Other Accession	P70375
Reactivity	Human, Mouse, Rat
Host	Rabbit
Clonality	Polyclonal
Calculated MW	51594

Additional Information

Gene ID	2155
Other Names	Coagulation factor VII; Proconvertin; Serum prothrombin conversion accelerator; SPCA; Eptacog alfa
Target/Specificity	KLH-conjugated synthetic peptide encompassing a sequence within the N-term region of human Factor VII. The exact sequence is proprietary.
Dilution	WB~~WB (1/500 - 1/1000)
Format	Liquid in 0.42% Potassium phosphate, 0.87% Sodium chloride, pH 7.3, 30% glycerol, and 0.09% (W/V) sodium azide.
Storage	Store at -20 °C. Stable for 12 months from date of receipt

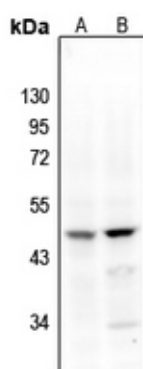
Protein Information

Name	F7
Function	Initiates the extrinsic pathway of blood coagulation. Serine protease that circulates in the blood in a zymogen form. Factor VII is converted to factor VIIa by factor Xa, factor XIIa, factor IXa, or thrombin by minor proteolysis. In the presence of tissue factor and calcium ions, factor VIIa then converts factor X to factor Xa by limited proteolysis. Factor VIIa also converts factor IX to factor IXa in the presence of tissue factor and calcium (PubMed: 271951).
Cellular Location	Secreted.
Tissue Location	Plasma.

Background

KLH-conjugated synthetic peptide encompassing a sequence within the N-term region of human Factor VII. The exact sequence is proprietary.

Images



Western blot analysis of Factor VII expression in C6 (A), CT26 (B) whole cell lysates.

Please note: All products are 'FOR RESEARCH USE ONLY. NOT FOR USE IN DIAGNOSTIC OR THERAPEUTIC PROCEDURES'.