

# Anti-IL-20 Antibody

Rabbit polyclonal antibody to IL-20  
Catalog # AP61234

## Product Information

Application	WB
Primary Accession	<a href="#">Q9NYY1</a>
Other Accession	<a href="#">Q9JKV9</a>
Reactivity	Human, Mouse, Rat
Host	Rabbit
Clonality	Polyclonal
Calculated MW	20072

## Additional Information

Gene ID	50604
Other Names	ZCYTO10; Interleukin-20; IL-20; Cytokine Zcyto10
Target/Specificity	Recognizes endogenous levels of IL-20 protein.
Dilution	WB~~WB (1/500 - 1/1000)
Format	Liquid in 0.42% Potassium phosphate, 0.87% Sodium chloride, pH 7.3, 30% glycerol, and 0.09% (W/V) sodium azide.
Storage	Store at -20 °C.Stable for 12 months from date of receipt

## Protein Information

Name	IL20
Synonyms	ZCYTO10
Function	<p>Pro-inflammatory and angiogenic cytokine mainly secreted by monocytes and skin keratinocytes that plays crucial roles in immune responses, regulation of inflammatory responses, hemopoiesis, as well as epidermal cell and keratinocyte differentiation (PubMed:<a href="#">17277128</a>, PubMed:<a href="#">34403503</a>). Enhances tissue remodeling and wound-healing activities and restores the homeostasis of epithelial layers during infection and inflammatory responses to maintain tissue integrity (PubMed:<a href="#">17277128</a>). Affects multiple actin-mediated functions in activated neutrophils leading to inhibition of phagocytosis, granule exocytosis, and migration (PubMed:<a href="#">28424238</a>). Exert its effects via the type I IL-20 receptor complex consisting of IL20RA and IL20RB (PubMed:<a href="#">11706020</a>). Alternatively, can mediate its activity through a second receptor complex called type II IL-20 receptor complex composed of IL22RA1 and IL20RB (PubMed:<a href="#">11564763</a>). Acts as an arteriogenic and vascular</p>

remodeling factory by activating a range of signaling processes including phosphorylations of JAK2 and STAT5 as well as activation of the serine and threonine kinases AKT and ERK1/2 (By similarity). Alternatively, can activate STAT3 phosphorylation and transcriptional activity in a JAK2, ERK1/2 and p38 MAPK-dependent manner in keratinocytes (PubMed:[23614738](#)).

**Cellular Location**

Secreted.

**Tissue Location**

Expressed in most tissues and five major cell types: epithelial cells (primarily skin, buccal mucosa, tongue, nasal mucosa, lung, ureter, breast, prostate, fallopian tube, and adrenal gland), myoepithelial cells (mainly prostate), endothelial cells (mainly in small vessels or capillaries), macrophages, and skeletal muscle. Isoform 2 was detected in the lung tissue only

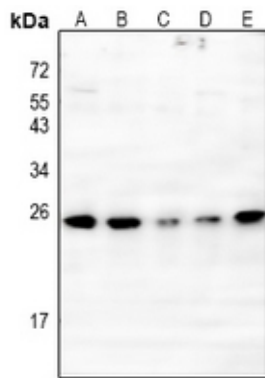
## Background

---

KLH-conjugated synthetic peptide encompassing a sequence within the center region of human IL-20. The exact sequence is proprietary.

## Images

---



Western blot analysis of IL-20 expression in A375 (A), PC3 (B), MCF7 (C), PMVEC (D), 3T3L1 (E) whole cell lysates.

Please note: All products are 'FOR RESEARCH USE ONLY. NOT FOR USE IN DIAGNOSTIC OR THERAPEUTIC PROCEDURES'.