

Anti-CXCL3 Antibody

Rabbit polyclonal antibody to CXCL3

Catalog # AP61235

Product Information

Application	WB, IHC
Primary Accession	P19876
Other Accession	Q6W5C0
Reactivity	Human, Mouse, Rat
Host	Rabbit
Clonality	Polyclonal
Calculated MW	11342

Additional Information

Gene ID	2921
Other Names	GRO3; GROG; SCYB3; C-X-C motif chemokine 3; GRO-gamma(1-73); Growth-regulated protein gamma; GRO-gamma; Macrophage inflammatory protein 2-beta; MIP2-beta
Target/Specificity	KLH-conjugated synthetic peptide encompassing a sequence within the C-term region of human CXCL3. The exact sequence is proprietary.
Dilution	WB~~WB (1/500 - 1/1000), IHC (1/50 - 1/200) IHC~~WB (1/500 - 1/1000), IHC (1/50 - 1/200)
Format	Liquid in 0.42% Potassium phosphate, 0.87% Sodium chloride, pH 7.3, 30% glycerol, and 0.09% (W/V) sodium azide.
Storage	Store at -20 °C.Stable for 12 months from date of receipt

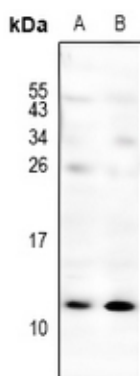
Protein Information

Name	CXCL3
Synonyms	GRO3, GROG, SCYB3
Function	Ligand for CXCR2 (By similarity). Has chemotactic activity for neutrophils. May play a role in inflammation and exert its effects on endothelial cells in an autocrine fashion. In vitro, the processed form GRO-gamma(5-73) shows a fivefold higher chemotactic activity for neutrophilic granulocytes.
Cellular Location	Secreted.

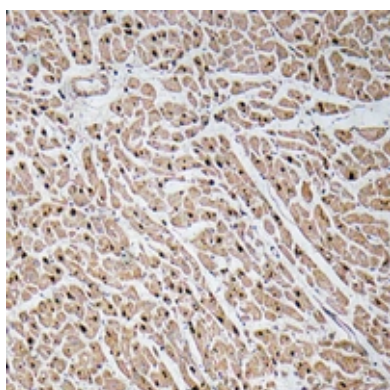
Background

KLH-conjugated synthetic peptide encompassing a sequence within the C-term region of human CXCL3. The exact sequence is proprietary.

Images



Western blot analysis of CXCL3 expression in H9C2 (A), AML12 (B) whole cell lysates.



Immunohistochemical analysis of CXCL3 staining in human heart formalin fixed paraffin embedded tissue section. The section was pre-treated using heat mediated antigen retrieval with sodium citrate buffer (pH 6.0). The section was then incubated with the antibody at room temperature and detected using an HRP conjugated compact polymer system. DAB was used as the chromogen. The section was then counterstained with haematoxylin and mounted with DPX.

Please note: All products are 'FOR RESEARCH USE ONLY. NOT FOR USE IN DIAGNOSTIC OR THERAPEUTIC PROCEDURES'.