

# Anti-Occludin Antibody

Rabbit polyclonal antibody to Occludin  
Catalog # AP61238

## Product Information

---

<b>Application</b>	WB
<b>Primary Accession</b>	<a href="#">Q16625</a>
<b>Other Accession</b>	<a href="#">Q61146</a>
<b>Reactivity</b>	Human, Mouse, Rat, Drosophila
<b>Host</b>	Rabbit
<b>Clonality</b>	Polyclonal
<b>Calculated MW</b>	59144

## Additional Information

---

<b>Gene ID</b>	100506658
<b>Other Names</b>	Occludin
<b>Target/Specificity</b>	Recognizes endogenous levels of Occludin protein.
<b>Dilution</b>	WB~~WB (1/500 - 1/1000)
<b>Format</b>	Liquid in 0.42% Potassium phosphate, 0.87% Sodium chloride, pH 7.3, 30% glycerol, and 0.09% (W/V) sodium azide.
<b>Storage</b>	Store at -20 °C.Stable for 12 months from date of receipt

## Protein Information

---

<b>Name</b>	OCLN
<b>Function</b>	May play a role in the formation and regulation of the tight junction (TJ) paracellular permeability barrier. It is able to induce adhesion when expressed in cells lacking tight junctions.
<b>Cellular Location</b>	Cell membrane; Multi-pass membrane protein. Cell junction, tight junction
<b>Tissue Location</b>	Localized at tight junctions of both epithelial and endothelial cells. Highly expressed in kidney. Not detected in testis

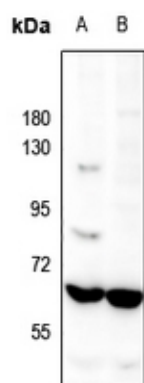
## Background

---

KLH-conjugated synthetic peptide encompassing a sequence within the C-term region of human Occludin. The exact sequence is proprietary.

## Images

---



Western blot analysis of Occludin expression in mouse kidney (A), rat kidney (B) whole cell lysates.

Please note: All products are 'FOR RESEARCH USE ONLY. NOT FOR USE IN DIAGNOSTIC OR THERAPEUTIC PROCEDURES'.