

Anti-PAI1 Antibody

Rabbit polyclonal antibody to PAI1
Catalog # AP61239

Product Information

Application	WB, IHC
Primary Accession	P05121
Other Accession	P22777
Reactivity	Human, Mouse, Rat
Host	Rabbit
Clonality	Polyclonal
Calculated MW	45060

Additional Information

Gene ID	5054
Other Names	PAI1; PLANH1; Plasminogen activator inhibitor 1; PAI; PAI-1; Endothelial plasminogen activator inhibitor; Serpin E1
Target/Specificity	Recognizes endogenous levels of PAI1 protein.
Dilution	WB~~WB (1/500 - 1/1000), IHC (1/50 - 1/200) IHC~~WB (1/500 - 1/1000), IHC (1/50 - 1/200)
Format	Liquid in 0.42% Potassium phosphate, 0.87% Sodium chloride, pH 7.3, 30% glycerol, and 0.09% (W/V) sodium azide.
Storage	Store at -20 °C.Stable for 12 months from date of receipt

Protein Information

Name	SERPINE1
Synonyms	PAI1, PLANH1
Function	Serine protease inhibitor. Inhibits TMPRSS7 (PubMed: 15853774). Is a primary inhibitor of tissue-type plasminogen activator (PLAT) and urokinase-type plasminogen activator (PLAU). As PLAT inhibitor, it is required for fibrinolysis down-regulation and is responsible for the controlled degradation of blood clots (PubMed: 17912461 , PubMed: 8481516 , PubMed: 9207454 , PubMed: 21925150). As PLAU inhibitor, it is involved in the regulation of cell adhesion and spreading (PubMed: 9175705). Acts as a regulator of cell migration, independently of its role as protease inhibitor (PubMed: 15001579 , PubMed: 9168821). It is required for stimulation of keratinocyte migration during cutaneous injury repair (PubMed: 18386027). It is involved in cellular and replicative senescence (PubMed: 16862142). Plays a

role in alveolar type 2 cells senescence in the lung (By similarity). Is involved in the regulation of cementogenic differentiation of periodontal ligament stem cells, and regulates odontoblast differentiation and dentin formation during odontogenesis (PubMed:[25808697](#), PubMed:[27046084](#)).

Cellular Location

Secreted.

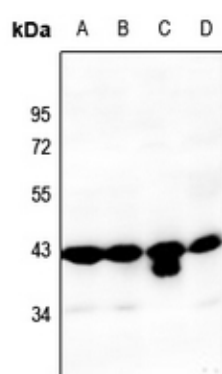
Tissue Location

Expressed in endothelial cells (PubMed:2430793, PubMed:3097076). Found in plasma, platelets, and hepatoma and fibrosarcoma cells.

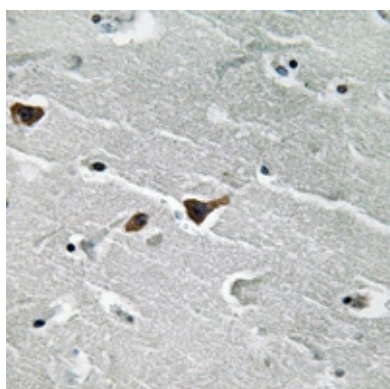
Background

KLH-conjugated synthetic peptide encompassing a sequence within the center region of human PAI1. The exact sequence is proprietary.

Images



Western blot analysis of PAI1 expression in DLD (A), HepG2 (B), PMVEC (C), AML12 (D) whole cell lysates.



Immunohistochemical analysis of PAI1 staining in human brain formalin fixed paraffin embedded tissue section. The section was pre-treated using heat mediated antigen retrieval with sodium citrate buffer (pH 6.0). The section was then incubated with the antibody at room temperature and detected using an HRP conjugated compact polymer system. DAB was used as the chromogen. The section was then counterstained with haematoxylin and mounted with DPX.

Please note: All products are 'FOR RESEARCH USE ONLY. NOT FOR USE IN DIAGNOSTIC OR THERAPEUTIC PROCEDURES'.