

# Anti-RAMP3 Antibody

Rabbit polyclonal antibody to RAMP3

Catalog # AP61241

## Product Information

---

Application	WB
Primary Accession	<a href="#">O60896</a>
Other Accession	<a href="#">Q9WUP1</a>
Reactivity	Human, Mouse, Rat
Host	Rabbit
Clonality	Polyclonal
Calculated MW	16518

## Additional Information

---

Gene ID	10268
Other Names	Receptor activity-modifying protein 3; Calcitonin-receptor-like receptor activity-modifying protein 3; CRLR activity-modifying protein 3
Target/Specificity	KLH-conjugated synthetic peptide encompassing a sequence within the center region of human RAMP3. The exact sequence is proprietary.
Dilution	WB~~WB (1/500 - 1/1000)
Format	Liquid in 0.42% Potassium phosphate, 0.87% Sodium chloride, pH 7.3, 30% glycerol, and 0.09% (W/V) sodium azide.
Storage	Store at -20 °C.Stable for 12 months from date of receipt

## Protein Information

---

Name	RAMP3 ( <a href="#">HGNC:9845</a> )
Function	<p>Accessory protein that interacts with and modulates the function of G-protein coupled receptors including calcitonin gene- related peptide type 1 receptor (CALCRL), calcitonin receptor (CALCR) and G-protein coupled estrogen receptor 1 (GPER1) (PubMed:<a href="#">23674134</a>, PubMed:<a href="#">9620797</a>). Required for the transport of CALCRL and GPER1 receptors to the plasma membrane (PubMed:<a href="#">23674134</a>, PubMed:<a href="#">9620797</a>). Plays a role in cardioprotection by reducing cardiac hypertrophy and perivascular fibrosis in a GPER1-dependent manner (PubMed:<a href="#">23674134</a>). Together with CALCRL, form a receptor complex for adrenomedullin/ADM and intermedin/ADM2 (PubMed:<a href="#">32296767</a>). Together with CALCR, act as a receptor complex for amylin/IAPP (PubMed:<a href="#">35324283</a>).</p>

Cell membrane; Single-pass type I membrane protein. Membrane; Single-pass

**Cellular Location** type I membrane protein. Note=Moves from intracellular puncta to the plasma membrane in a RAMP3-dependent manner

**Tissue Location** Strongly expressed in lung, breast, immune system and fetal tissues.

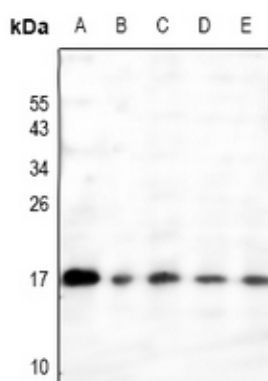
## Background

---

KLH-conjugated synthetic peptide encompassing a sequence within the center region of human RAMP3. The exact sequence is proprietary.

## Images

---



Western blot analysis of RAMP3 expression in H1792 (A), MCF7 (B), Myla2059 (C), 3T3L1 (D), PMVEC (E) whole cell lysates.

Please note: All products are 'FOR RESEARCH USE ONLY. NOT FOR USE IN DIAGNOSTIC OR THERAPEUTIC PROCEDURES'.