

Anti-CD132 Antibody

Rabbit polyclonal antibody to CD132

Catalog # AP61242

Product Information

Application	WB
Primary Accession	P31785
Other Accession	P34902
Reactivity	Human, Mouse, Rat, Pig
Host	Rabbit
Clonality	Polyclonal
Calculated MW	42287

Additional Information

Gene ID	3561
Other Names	Cytokine receptor common subunit gamma; Interleukin-2 receptor subunit gamma; IL-2 receptor subunit gamma; IL-2R subunit gamma; IL-2RG; gammaC; p64; CD132
Target/Specificity	Recognizes endogenous levels of CD132 protein.
Dilution	WB~~WB (1/500 - 1/1000)
Format	Liquid in 0.42% Potassium phosphate, 0.87% Sodium chloride, pH 7.3, 30% glycerol, and 0.09% (W/V) sodium azide.
Storage	Store at -20 °C.Stable for 12 months from date of receipt

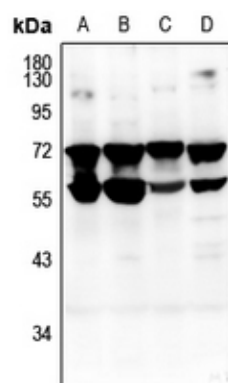
Protein Information

Name	IL2RG
Function	Common subunit for the receptors for a variety of interleukins. Probably in association with IL15RA, involved in the stimulation of neutrophil phagocytosis by IL15 (PubMed: 15123770).
Cellular Location	Cell membrane; Single-pass type I membrane protein. Cell surface

Background

KLH-conjugated synthetic peptide encompassing a sequence within the center region of human CD132. The exact sequence is proprietary.

Images



Western blot analysis of CD132 expression in Myla2059 (A), HCT116 (B), mouse lung (C), rat spleen (D) whole cell lysates.

Please note: All products are 'FOR RESEARCH USE ONLY. NOT FOR USE IN DIAGNOSTIC OR THERAPEUTIC PROCEDURES'.