

# Anti-CD11b Antibody

Rabbit polyclonal antibody to CD11b

Catalog # AP61243

## Product Information

---

<b>Application</b>	WB, IHC
<b>Primary Accession</b>	<a href="#">P11215</a>
<b>Reactivity</b>	Human
<b>Host</b>	Rabbit
<b>Clonality</b>	Polyclonal
<b>Calculated MW</b>	127179

## Additional Information

---

<b>Gene ID</b>	3684
<b>Other Names</b>	CD11B; CR3A; Integrin alpha-M; CD11 antigen-like family member B; CR-3 alpha chain; Cell surface glycoprotein MAC-1 subunit alpha; Leukocyte adhesion receptor MO1; Neutrophil adherence receptor; CD11b
<b>Target/Specificity</b>	Recognizes endogenous levels of CD11b protein.
<b>Dilution</b>	WB~~WB (1/500 - 1/1000), IHC (1/50 - 1/200) IHC~~WB (1/500 - 1/1000), IHC (1/50 - 1/200)
<b>Format</b>	Liquid in 0.42% Potassium phosphate, 0.87% Sodium chloride, pH 7.3, 30% glycerol, and 0.09% (W/V) sodium azide.
<b>Storage</b>	Store at -20 °C.Stable for 12 months from date of receipt

## Protein Information

---

<b>Name</b>	ITGAM
<b>Synonyms</b>	CD11B, CR3A
<b>Function</b>	Integrin ITGAM/ITGB2 is implicated in various adhesive interactions of monocytes, macrophages and granulocytes as well as in mediating the uptake of complement-coated particles and pathogens (PubMed: <a href="#">20008295</a> , PubMed: <a href="#">9558116</a> ). It is identical with CR-3, the receptor for the iC3b fragment of the third complement component. It probably recognizes the R-G-D peptide in C3b. Integrin ITGAM/ITGB2 is also a receptor for fibrinogen, factor X and ICAM1. It recognizes P1 and P2 peptides of fibrinogen gamma chain. Regulates neutrophil migration (PubMed: <a href="#">28807980</a> ). In association with beta subunit ITGB2/CD18, required for CD177-PRTN3-mediated activation of TNF primed neutrophils (PubMed: <a href="#">21193407</a> ). May regulate phagocytosis-induced apoptosis in extravasated neutrophils (By similarity). May play a role in mast

cell development (By similarity). Required with TYROBP/DAP12 in microglia to control production of microglial superoxide ions which promote the neuronal apoptosis that occurs during brain development (By similarity).

**Cellular Location**

Cell membrane; Single-pass type I membrane protein. Membrane raft; Single-pass type I membrane protein

**Tissue Location**

Predominantly expressed in monocytes and granulocytes (PubMed:1346576). Expressed in neutrophils (at protein level) (PubMed:21193407).

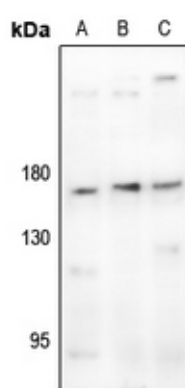
## Background

---

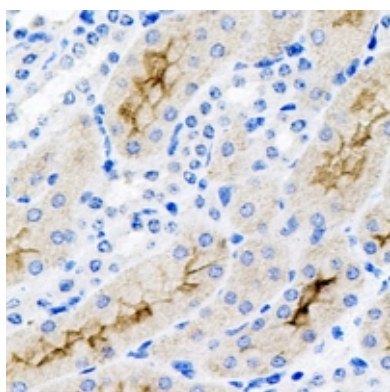
KLH-conjugated synthetic peptide encompassing a sequence within the center region of human CD11b. The exact sequence is proprietary.

## Images

---



Western blot analysis of CD11b expression in SHSY5Y (A), U87MG (B), A549 (C) whole cell lysates.



Immunohistochemical analysis of CD11b staining in human kidney formalin fixed paraffin embedded tissue section. The section was pre-treated using heat mediated antigen retrieval with sodium citrate buffer (pH 6.0). The section was then incubated with the antibody at room temperature and detected using an HRP conjugated compact polymer system. DAB was used as the chromogen. The section was then counterstained with haematoxylin and mounted with DPX.

Please note: All products are 'FOR RESEARCH USE ONLY. NOT FOR USE IN DIAGNOSTIC OR THERAPEUTIC PROCEDURES'.