

# Anti-CD166 Antibody

Rabbit polyclonal antibody to CD166

Catalog # AP61246

## Product Information

Application	WB, IHC
Primary Accession	<a href="#">Q13740</a>
Other Accession	<a href="#">Q61490</a>
Reactivity	Human, Mouse, Rat
Host	Rabbit
Clonality	Polyclonal
Calculated MW	65102

## Additional Information

Gene ID	214
Other Names	MEMD; CD166 antigen; Activated leukocyte cell adhesion molecule; CD166
Target/Specificity	KLH-conjugated synthetic peptide encompassing a sequence within the C-term region of human CD166. The exact sequence is proprietary.
Dilution	WB~~WB (1/500 - 1/1000), IHC (1/50 - 1/200) IHC~~WB (1/500 - 1/1000), IHC (1/50 - 1/200)
Format	Liquid in 0.42% Potassium phosphate, 0.87% Sodium chloride, pH 7.3, 30% glycerol, and 0.09% (W/V) sodium azide.
Storage	Store at -20 °C.Stable for 12 months from date of receipt

## Protein Information

Name	ALCAM
Synonyms	MEMD {ECO:0000303 PubMed:9502422}
Function	Cell adhesion molecule that mediates both heterotypic cell- cell contacts via its interaction with CD6, as well as homotypic cell- cell contacts (PubMed: <a href="#">15048703</a> , PubMed: <a href="#">15496415</a> , PubMed: <a href="#">16352806</a> , PubMed: <a href="#">23169771</a> , PubMed: <a href="#">24945728</a> , PubMed: <a href="#">7760007</a> ). Promotes T-cell activation and proliferation via its interactions with CD6 (PubMed: <a href="#">15048703</a> , PubMed: <a href="#">16352806</a> , PubMed: <a href="#">24945728</a> ). Contributes to the formation and maturation of the immunological synapse via its interactions with CD6 (PubMed: <a href="#">15294938</a> , PubMed: <a href="#">16352806</a> ). Mediates homotypic interactions with cells that express ALCAM (PubMed: <a href="#">15496415</a> , PubMed: <a href="#">16352806</a> ). Acts as a ligand for the LILRB4 receptor, enhancing LILRB4-mediated inhibition of T cell proliferation (PubMed: <a href="#">29263213</a> ). Required for normal hematopoietic

stem cell engraftment in the bone marrow (PubMed:[24740813](#)). Mediates attachment of dendritic cells onto endothelial cells via homotypic interaction (PubMed:[23169771](#)). Inhibits endothelial cell migration and promotes endothelial tube formation via homotypic interactions (PubMed:[15496415](#), PubMed:[23169771](#)). Required for normal organization of the lymph vessel network. Required for normal hematopoietic stem cell engraftment in the bone marrow. Plays a role in hematopoiesis; required for normal numbers of hematopoietic stem cells in bone marrow. Promotes in vitro osteoblast proliferation and differentiation (By similarity). Promotes neurite extension, axon growth and axon guidance; axons grow preferentially on surfaces that contain ALCAM. Mediates outgrowth and pathfinding for retinal ganglion cell axons (By similarity).

### Cellular Location

Cell membrane; Single-pass type I membrane protein. Cell projection, axon {ECO:0000250|UniProtKB:Q61490}. Cell projection, dendrite {ECO:0000250|UniProtKB:Q61490}. Note=Detected at the immunological synapse, i.e, at the contact zone between antigen-presenting dendritic cells and T-cells (PubMed:15294938, PubMed:16352806). Colocalizes with CD6 and the TCR/CD3 complex at the immunological synapse (PubMed:15294938).

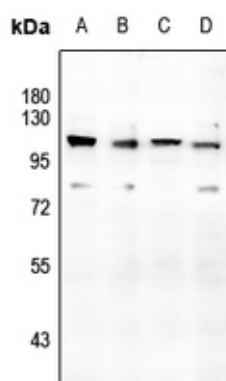
### Tissue Location

Detected on hematopoietic stem cells derived from umbilical cord blood (PubMed:24740813). Detected on lymph vessel endothelial cells, skin and tonsil (PubMed:23169771). Detected on peripheral blood monocytes (PubMed:15048703). Detected on monocyte- derived dendritic cells (at protein level) (PubMed:16352806). Detected at low levels in spleen, placenta, liver (PubMed:9502422). Expressed by activated T-cells, B-cells, monocytes and thymic epithelial cells (PubMed:7760007). Isoform 1 and isoform 3 are detected in vein and artery endothelial cells, astrocytes, keratinocytes and artery smooth muscle cells (PubMed:15496415). Expressed by neurons in the brain Restricted expression in tumor cell lines. Detected in highly metastasizing melanoma cell lines (PubMed:9502422)

## Background

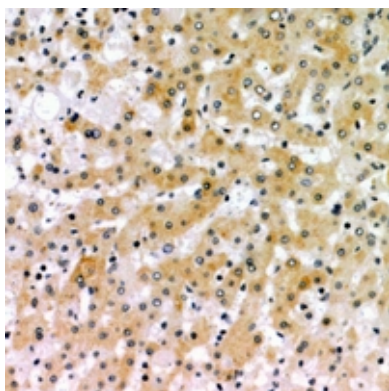
KLH-conjugated synthetic peptide encompassing a sequence within the C-term region of human CD166. The exact sequence is proprietary.

## Images



Western blot analysis of CD166 expression in HEK293T (A), HepG2 (B), PMVEC (C), AML12 (D) whole cell lysates.

Immunohistochemical analysis of CD166 staining in human liver formalin fixed paraffin embedded tissue section. The section was pre-treated using heat mediated antigen retrieval with sodium citrate buffer (pH 6.0). The section was then incubated with the antibody at room temperature and detected using an HRP conjugated



compact polymer system. DAB was used as the chromogen. The section was then counterstained with haematoxylin and mounted with DPX.

Please note: All products are 'FOR RESEARCH USE ONLY. NOT FOR USE IN DIAGNOSTIC OR THERAPEUTIC PROCEDURES'.