

# Anti-CBX6 Antibody

Rabbit polyclonal antibody to CBX6

Catalog # AP61301

## Product Information

Application	WB, IHC
Primary Accession	<a href="#">Q95503</a>
Other Accession	<a href="#">Q9DBY5</a>
Reactivity	Human, Mouse, Rat, Bovine, Drosophila
Host	Rabbit
Clonality	Polyclonal
Calculated MW	43898

## Additional Information

Gene ID	23466
Other Names	Chromobox protein homolog 6
Target/Specificity	Recognizes endogenous levels of CBX6 protein.
Dilution	WB~~WB (1/500 - 1/1000), IHC (1/50 - 1/200) IHC~~WB (1/500 - 1/1000), IHC (1/50 - 1/200)
Format	Liquid in 0.42% Potassium phosphate, 0.87% Sodium chloride, pH 7.3, 30% glycerol, and 0.09% (W/V) sodium azide.
Storage	Store at -20 °C.Stable for 12 months from date of receipt

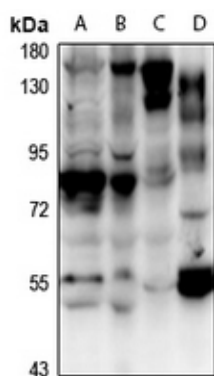
## Protein Information

Name	CBX6
Function	Component of a Polycomb group (PcG) multiprotein PRC1-like complex, a complex class required to maintain the transcriptionally repressive state of many genes, including Hox genes, throughout development (PubMed: <a href="#">21282530</a> ). PcG PRC1 complex acts via chromatin remodeling and modification of histones; it mediates monoubiquitination of histone H2A 'Lys-119', rendering chromatin heritably changed in its expressibility. Possibly contributes to the target selectivity of the PRC1 complex by binding specific regions of chromatin (PubMed: <a href="#">18927235</a> ). Recruitment to chromatin might occur in an H3K27me3- independent fashion (By similarity). May have a PRC1-independent function in embryonic stem cells (By similarity).
Cellular Location	Nucleus. Chromosome. Note=Uniformly distributed in the nucleoplasm (PubMed: <a href="#">18927235</a> ). Localizes to the inactivated X chromosome in females (By similarity). {ECO:0000250 UniProtKB:Q9DBY5,

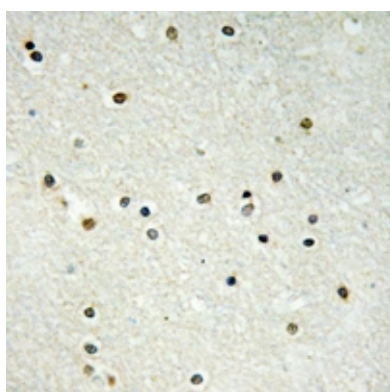
## Background

KLH-conjugated synthetic peptide encompassing a sequence within the N-term region of human CBX6. The exact sequence is proprietary.

## Images



Western blot analysis of CBX6 expression in HEK293T (A), HCT116 (B), mouse testis (C), rat kidney (D) whole cell lysates.



Immunohistochemical analysis of CBX6 staining in human brain formalin fixed paraffin embedded tissue section. The section was pre-treated using heat mediated antigen retrieval with sodium citrate buffer (pH 6.0). The section was then incubated with the antibody at room temperature and detected using an HRP conjugated compact polymer system. DAB was used as the chromogen. The section was then counterstained with haematoxylin and mounted with DPX.

Please note: All products are 'FOR RESEARCH USE ONLY. NOT FOR USE IN DIAGNOSTIC OR THERAPEUTIC PROCEDURES'.