

Anti-ZNF18 Antibody

Rabbit polyclonal antibody to ZNF18
Catalog # AP61303

Product Information

Application	WB
Primary Accession	P17022
Other Accession	Q810A1
Reactivity	Human, Mouse, Rat, Monkey, Pig
Host	Rabbit
Clonality	Polyclonal
Calculated MW	62288

Additional Information

Gene ID	7566
Other Names	HDSG1; KOX11; ZKSCAN6; ZNF535; Zinc finger protein 18; Heart development-specific gene 1 protein; Zinc finger protein 535; Zinc finger protein KOX11; Zinc finger protein with KRAB and SCAN domains 6
Target/Specificity	KLH-conjugated synthetic peptide encompassing a sequence within the center region of human ZNF18. The exact sequence is proprietary.
Dilution	WB~~WB (1/500 - 1/1000)
Format	Liquid in 0.42% Potassium phosphate, 0.87% Sodium chloride, pH 7.3, 30% glycerol, and 0.09% (W/V) sodium azide.
Storage	Store at -20 °C.Stable for 12 months from date of receipt

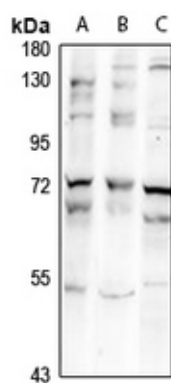
Protein Information

Name	ZNF18
Synonyms	HDSG1, KOX11, ZKSCAN6, ZNF535
Function	May be involved in transcriptional regulation.
Cellular Location	Nucleus {ECO:0000255 PROSITE-ProRule:PRU00187}.

Background

KLH-conjugated synthetic peptide encompassing a sequence within the center region of human ZNF18. The exact sequence is proprietary.

Images



Western blot analysis of ZNF18 expression in Raw264.7 (A), SKOVCA3 (B), MCF7 (C) whole cell lysates.

Please note: All products are 'FOR RESEARCH USE ONLY. NOT FOR USE IN DIAGNOSTIC OR THERAPEUTIC PROCEDURES'.