

Anti-WTAP Antibody

Rabbit polyclonal antibody to WTAP

Catalog # AP61311

Product Information

Application	WB, IHC
Primary Accession	Q15007
Other Accession	Q9ER69
Reactivity	Human, Mouse, Rat
Host	Rabbit
Clonality	Polyclonal
Calculated MW	44244

Additional Information

Gene ID	9589
Other Names	KIAA0105; Pre-mRNA-splicing regulator WTAP; Female-lethal(2)D homolog; hFL(2)D; WT1-associated protein; Wilms tumor 1-associating protein
Target/Specificity	KLH-conjugated synthetic peptide encompassing a sequence within the C-term region of human WTAP. The exact sequence is proprietary.
Dilution	WB~~WB (1/500 - 1/1000), IHC (1/50 - 1/200) IHC~~WB (1/500 - 1/1000), IHC (1/50 - 1/200)
Format	Liquid in 0.42% Potassium phosphate, 0.87% Sodium chloride, pH 7.3, 30% glycerol, and 0.09% (W/V) sodium azide.
Storage	Store at -20 °C.Stable for 12 months from date of receipt

Protein Information

Name	WTAP {ECO:0000303 PubMed:11001926, ECO:0000312 HGNC:HGNC:16846}
Function	Associated component of the WMM complex, a complex that mediates N6-methyladenosine (m6A) methylation of RNAs, a modification that plays a role in the efficiency of mRNA splicing and RNA processing (PubMed: 29507755). Required for accumulation of METTL3 and METTL14 to nuclear speckle (PubMed: 24316715 , PubMed: 24407421 , PubMed: 24981863). Acts as a mRNA splicing regulator (PubMed: 12444081). Regulates G2/M cell-cycle transition by binding to the 3' UTR of CCNA2, which enhances its stability (PubMed: 17088532). Impairs WT1 DNA-binding ability and inhibits expression of WT1 target genes (PubMed: 17095724).
Cellular Location	Nucleus speckle. Nucleus, nucleoplasm. Cytoplasm {ECO:0000250 UniProtKB:Q9ER69}. Note=Mainly nuclear with some fraction

located in the cytoplasm. ZC3H13 is required to anchor component of the MACOM subcomplex, such as VIRMA, in the nucleus
{ECO:0000250|UniProtKB:Q9ER69}

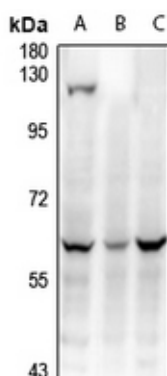
Tissue Location

Ubiquitously expressed.

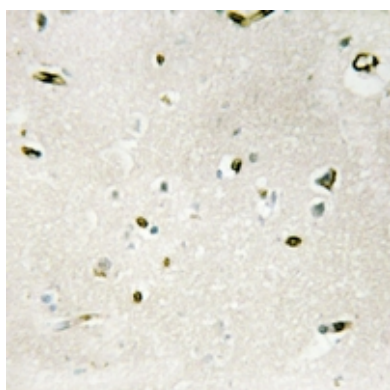
Background

KLH-conjugated synthetic peptide encompassing a sequence within the C-term region of human WTAP. The exact sequence is proprietary.

Images



Western blot analysis of WTAP expression in MEF (A), EC9706 (B), Panc1 (C) whole cell lysates.



Immunohistochemical analysis of WTAP staining in human brain formalin fixed paraffin embedded tissue section. The section was pre-treated using heat mediated antigen retrieval with sodium citrate buffer (pH 6.0). The section was then incubated with the antibody at room temperature and detected using an HRP conjugated compact polymer system. DAB was used as the chromogen. The section was then counterstained with haematoxylin and mounted with DPX.

Please note: All products are 'FOR RESEARCH USE ONLY. NOT FOR USE IN DIAGNOSTIC OR THERAPEUTIC PROCEDURES'.