

# Anti-DUSP19 Antibody

Rabbit polyclonal antibody to DUSP19

Catalog # AP61313

## Product Information

---

Application	WB, IF/IC
Primary Accession	<a href="#">Q8WTR2</a>
Reactivity	Human, Monkey
Host	Rabbit
Clonality	Polyclonal
Calculated MW	24194

## Additional Information

---

Gene ID	142679
Other Names	DUSP17; LMWDSP3; SKRP1; Dual specificity protein phosphatase 19; Dual specificity phosphatase TS-DSP1; Low molecular weight dual specificity phosphatase 3; LMW-DSP3; Protein phosphatase SKRP1; Stress-activated protein kinase pathway-regulating phosphatase 1; SAPK pathway-regulating phosphatase 1
Target/Specificity	KLH-conjugated synthetic peptide encompassing a sequence within the center region of human DUSP19. The exact sequence is proprietary.
Dilution	WB~~WB (1/500 - 1/1000), IF/IC (1/100 - 1/500) IF/IC~~N/A
Format	Liquid in 0.42% Potassium phosphate, 0.87% Sodium chloride, pH 7.3, 30% glycerol, and 0.09% (W/V) sodium azide.
Storage	Store at -20 °C.Stable for 12 months from date of receipt

## Protein Information

---

Name	DUSP19 ( <a href="#">HGNC:18894</a> )
Synonyms	DUSP17, LMWDSP3, SKRP1
Function	Has a dual specificity toward Ser/Thr and Tyr-containing proteins.
Tissue Location	Expressed in the heart, lung, liver, and pancreas. The expression level in the pancreas is the highest

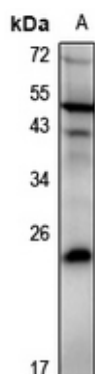
## Background

---

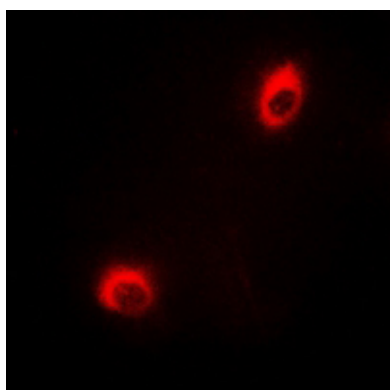
KLH-conjugated synthetic peptide encompassing a sequence within the center region of human DUSP19. The exact sequence is proprietary.

## Images

---



Western blot analysis of DUSP19 expression in Panc1 (A) whole cell lysates.



Immunofluorescent analysis of DUSP19 staining in HeLa cells. Formalin-fixed cells were permeabilized with 0.1% Triton X-100 in TBS for 5-10 minutes and blocked with 3% BSA-PBS for 30 minutes at room temperature. Cells were probed with the primary antibody in 3% BSA-PBS and incubated overnight at 4 °C in a humidified chamber. Cells were washed with PBST and incubated with a Alexa Fluor 594-conjugated secondary antibody (red) in PBS at room temperature in the dark.

Please note: All products are 'FOR RESEARCH USE ONLY. NOT FOR USE IN DIAGNOSTIC OR THERAPEUTIC PROCEDURES'.