

Anti-DLX4 Antibody

Rabbit polyclonal antibody to DLX4
Catalog # AP61315

Product Information

Application	WB, IF/IC, IHC
Primary Accession	Q92988
Other Accession	P70436
Reactivity	Human, Mouse, Rat
Host	Rabbit
Clonality	Polyclonal
Calculated MW	26263

Additional Information

Gene ID	1748
Other Names	BP1; DLX7; DLX8; DLX9; Homeobox protein DLX-4; Beta protein 1; Homeobox protein DLX-7; Homeobox protein DLX-8
Target/Specificity	Recognizes endogenous levels of DLX4 protein.
Dilution	WB~~WB (1/500 - 1/1000), IHC (1/50 - 1/200), IF/IC (1/100 - 1/500) IF/IC~~N/A IHC~~WB (1/500 - 1/1000), IHC (1/50 - 1/200), IF/IC (1/100 - 1/500)
Format	Liquid in 0.42% Potassium phosphate, 0.87% Sodium chloride, pH 7.3, 30% glycerol, and 0.09% (W/V) sodium azide.
Storage	Store at -20 °C.Stable for 12 months from date of receipt

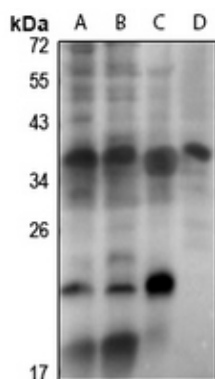
Protein Information

Name	DLX4
Synonyms	BP1, DLX7, DLX8, DLX9
Function	May play a role in determining the production of hemoglobin S. May act as a repressor. During embryonic development, plays a role in palatogenesis.
Cellular Location	Nucleus.
Tissue Location	Expressed in leukemia cells and placenta. Also expressed in kidney and fetal liver.

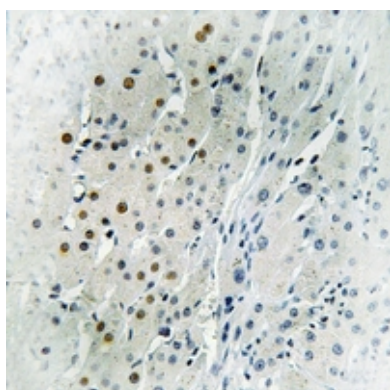
Background

KLH-conjugated synthetic peptide encompassing a sequence within the center region of human DLX4. The exact sequence is proprietary.

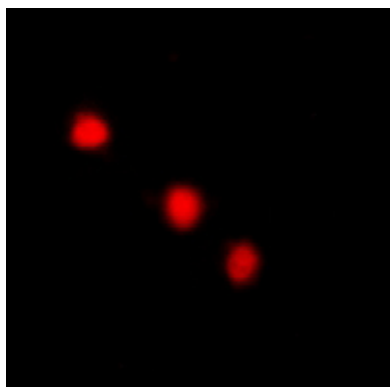
Images



Western blot analysis of DLX4 expression in Jurkat (A), HEK293T (B), mouse embryo (C), rat kidney (D) whole cell lysates.



Immunohistochemical analysis of DLX4 staining in human liver cancer formalin fixed paraffin embedded tissue section. The section was pre-treated using heat mediated antigen retrieval with sodium citrate buffer (pH 6.0). The section was then incubated with the antibody at room temperature and detected using an HRP conjugated compact polymer system. DAB was used as the chromogen. The section was then counterstained with haematoxylin and mounted with DPX.



Immunofluorescent analysis of DLX4 staining in LOVO cells. Formalin-fixed cells were permeabilized with 0.1% Triton X-100 in TBS for 5-10 minutes and blocked with 3% BSA-PBS for 30 minutes at room temperature. Cells were probed with the primary antibody in 3% BSA-PBS and incubated overnight at 4 °C in a humidified chamber. Cells were washed with PBST and incubated with a Alexa Fluor 594-conjugated secondary antibody (red) in PBS at room temperature in the dark.

Please note: All products are 'FOR RESEARCH USE ONLY. NOT FOR USE IN DIAGNOSTIC OR THERAPEUTIC PROCEDURES'.