

Anti-BWR1A Antibody

Rabbit polyclonal antibody to BWR1A

Catalog # AP61316

Product Information

Application	WB, IF/IC
Primary Accession	Q96BI1
Other Accession	Q78KK3
Reactivity	Human, Mouse, Rat, Monkey
Host	Rabbit
Clonality	Polyclonal
Calculated MW	44846

Additional Information

Gene ID	5002
Other Names	BWR1A; BWSCR1A; HET; IMPT1; ITM; ORCTL2; SLC22A1L; TSSC5; Solute carrier family 22 member 18; Beckwith-Wiedemann syndrome chromosomal region 1 candidate gene A protein; Efflux transporter-like protein; Imprinted multi-membrane-spanning polyspecific transporter-related protein 1; Organic cation transporter-like protein 2; ORCTL-2; Solute carrier family 22 member 1-like; Tumor-suppressing STF cDNA 5 protein; Tumor-suppressing subchromosomal transferable fragment candidate gene 5 protein; p45-Beckwith-Wiedemann region 1 A; p45-BWR1A
Target/Specificity	Recognizes endogenous levels of BWR1A protein.
Dilution	WB~~WB (1/500 - 1/1000), IF/IC (1/100 - 1/500) IF/IC~~N/A
Format	Liquid in 0.42% Potassium phosphate, 0.87% Sodium chloride, pH 7.3, 30% glycerol, and 0.09% (W/V) sodium azide.
Storage	Store at -20 °C.Stable for 12 months from date of receipt

Protein Information

Name	SLC67A1 (HGNC:10964)
Function	May act as a transporter of organic cations based on a proton efflux antiport mechanism. May play a role in the transport of chloroquine and quinidine-related compounds in kidney (PubMed: 9744804). Plays a role in the regulation of lipid metabolism (By similarity).
Cellular Location	Apical cell membrane; Multi-pass membrane protein. Note=Localized at the apical membrane surface of renal proximal tubules.

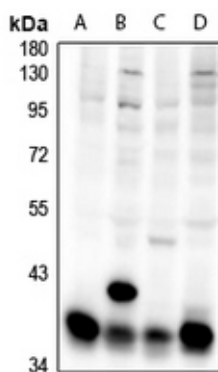
Tissue Location

Expressed at high levels in adult and fetal kidney and liver, and adult colon. Expressed in fetal renal proximal tubules (at protein level). Expressed at lower levels in heart, brain and lung

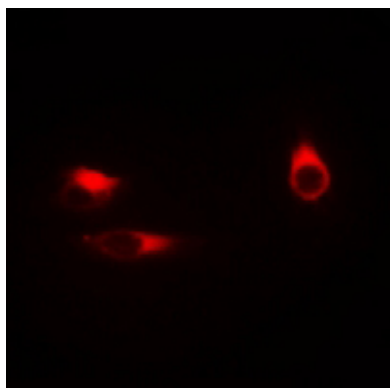
Background

KLH-conjugated synthetic peptide encompassing a sequence within the C-term region of human BWR1A. The exact sequence is proprietary.

Images



Western blot analysis of BWR1A expression in C6 (A), CT26 (B), HeLa (C), A2780 (D) whole cell lysates.



Immunofluorescent analysis of BWR1A staining in HeLa cells. Formalin-fixed cells were permeabilized with 0.1% Triton X-100 in TBS for 5-10 minutes and blocked with 3% BSA-PBS for 30 minutes at room temperature. Cells were probed with the primary antibody in 3% BSA-PBS and incubated overnight at 4 °C in a humidified chamber. Cells were washed with PBST and incubated with a Alexa Fluor 594-conjugated secondary antibody (red) in PBS at room temperature in the dark.

Please note: All products are 'FOR RESEARCH USE ONLY. NOT FOR USE IN DIAGNOSTIC OR THERAPEUTIC PROCEDURES'.