

# Anti-RBPJL Antibody

Rabbit polyclonal antibody to RBPJL

Catalog # AP61318

## Product Information

---

<b>Application</b>	WB
<b>Primary Accession</b>	<a href="#">Q9UBG7</a>
<b>Other Accession</b>	<a href="#">O08674</a>
<b>Reactivity</b>	Human, Mouse, Rat
<b>Host</b>	Rabbit
<b>Clonality</b>	Polyclonal
<b>Calculated MW</b>	56751

## Additional Information

---

<b>Gene ID</b>	11317
<b>Other Names</b>	RBPL; RBPSUHL; Recombining binding protein suppressor of hairless-like protein; Transcription factor RBP-L
<b>Target/Specificity</b>	Recognizes endogenous levels of RBPJL protein.
<b>Dilution</b>	WB~~WB (1/500 - 1/1000)
<b>Format</b>	Liquid in 0.42% Potassium phosphate, 0.87% Sodium chloride, pH 7.3, 30% glycerol, and 0.09% (W/V) sodium azide.
<b>Storage</b>	Store at -20 °C.Stable for 12 months from date of receipt

## Protein Information

---

<b>Name</b>	RBPJL
<b>Synonyms</b>	RBPL, RBPSUHL
<b>Function</b>	Putative transcription factor, which cooperates with EBNA2 to activate transcription.
<b>Cellular Location</b>	Nucleus.

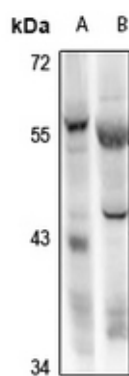
## Background

---

KLH-conjugated synthetic peptide encompassing a sequence within the center region of human RBPJL. The exact sequence is proprietary.

## Images

---



Western blot analysis of RBPJL expression in Myla2059 (A), mouse pancreas (B) whole cell lysates.

Please note: All products are 'FOR RESEARCH USE ONLY. NOT FOR USE IN DIAGNOSTIC OR THERAPEUTIC PROCEDURES'.