

# Anti-MINT3 Antibody

Rabbit polyclonal antibody to MINT3

Catalog # AP61325

## Product Information

---

<b>Application</b>	WB, IHC
<b>Primary Accession</b>	<a href="#">O96018</a>
<b>Reactivity</b>	Human
<b>Host</b>	Rabbit
<b>Clonality</b>	Polyclonal
<b>Calculated MW</b>	61454

## Additional Information

---

<b>Gene ID</b>	9546
<b>Other Names</b>	MINT3; X11L2; Amyloid beta A4 precursor protein-binding family A member 3; Adapter protein X11gamma; Neuron-specific X11L2 protein; Neuronal Munc18-1-interacting protein 3; Mint-3
<b>Target/Specificity</b>	Recognizes endogenous levels of MINT3 protein.
<b>Dilution</b>	WB~~WB (1/500 - 1/1000), IHC (1/50 - 1/200) IHC~~WB (1/500 - 1/1000), IHC (1/50 - 1/200)
<b>Format</b>	Liquid in 0.42% Potassium phosphate, 0.87% Sodium chloride, pH 7.3, 30% glycerol, and 0.09% (W/V) sodium azide.
<b>Storage</b>	Store at -20 °C.Stable for 12 months from date of receipt

## Protein Information

---

<b>Name</b>	APBA3
<b>Synonyms</b>	MINT3, X11L2
<b>Function</b>	May modulate processing of the amyloid-beta precursor protein (APP) and hence formation of APP-beta. May enhance the activity of HIF1A in macrophages by inhibiting the activity of HIF1AN.
<b>Cellular Location</b>	Cytoplasm, perinuclear region
<b>Tissue Location</b>	Expressed in all tissues examined with lower levels in brain and testis

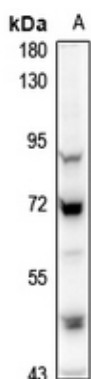
## Background

---

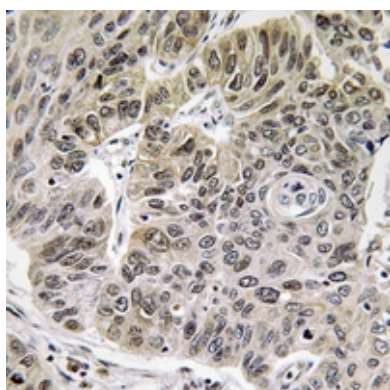
KLH-conjugated synthetic peptide encompassing a sequence within the center region of human MINT3. The exact sequence is proprietary.

## Images

---



Western blot analysis of MINT3 expression in MCF7 (A) whole cell lysates.



Immunohistochemical analysis of MINT3 staining in human lung cancer formalin fixed paraffin embedded tissue section. The section was pre-treated using heat mediated antigen retrieval with sodium citrate buffer (pH 6.0). The section was then incubated with the antibody at room temperature and detected using an HRP conjugated compact polymer system. DAB was used as the chromogen. The section was then counterstained with haematoxylin and mounted with DPX.

Please note: All products are 'FOR RESEARCH USE ONLY. NOT FOR USE IN DIAGNOSTIC OR THERAPEUTIC PROCEDURES'.