

Anti-Carboxypeptidase M Antibody

Rabbit polyclonal antibody to Carboxypeptidase M

Catalog # AP61327

Product Information

Application	WB
Primary Accession	P14384
Other Accession	Q80V42
Reactivity	Human, Mouse, Rat, Monkey
Host	Rabbit
Clonality	Polyclonal
Calculated MW	50514

Additional Information

Gene ID	1368
Other Names	Carboxypeptidase M; CPM
Target/Specificity	Recognizes endogenous levels of Carboxypeptidase M protein.
Dilution	WB~~WB (1/500 - 1/1000)
Format	Liquid in 0.42% Potassium phosphate, 0.87% Sodium chloride, pH 7.3, 30% glycerol, and 0.09% (W/V) sodium azide.
Storage	Store at -20 °C.Stable for 12 months from date of receipt

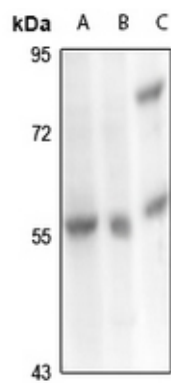
Protein Information

Name	CPM
Function	Specifically removes C-terminal basic residues (Arg or Lys) from peptides and proteins. It is believed to play important roles in the control of peptide hormone and growth factor activity at the cell surface, and in the membrane-localized degradation of extracellular proteins.
Cellular Location	Cell membrane; Lipid-anchor, GPI-anchor

Background

KLH-conjugated synthetic peptide encompassing a sequence within the center region of human Carboxypeptidase M. The exact sequence is proprietary.

Images



Western blot analysis of Carboxypeptidase M expression in rat kidney (A), PC3 (B), mouse kidney (C) whole cell lysates.

Please note: All products are 'FOR RESEARCH USE ONLY. NOT FOR USE IN DIAGNOSTIC OR THERAPEUTIC PROCEDURES'.