

# Anti-Carboxypeptidase O Antibody

Rabbit polyclonal antibody to Carboxypeptidase O

Catalog # AP61328

## Product Information

---

|                          |                        |
|--------------------------|------------------------|
| <b>Application</b>       | WB                     |
| <b>Primary Accession</b> | <a href="#">Q8IVL8</a> |
| <b>Reactivity</b>        | Human, Mouse, Rat      |
| <b>Host</b>              | Rabbit                 |
| <b>Clonality</b>         | Polyclonal             |
| <b>Calculated MW</b>     | 42529                  |

## Additional Information

---

|                           |                                                                                                                 |
|---------------------------|-----------------------------------------------------------------------------------------------------------------|
| <b>Gene ID</b>            | 130749                                                                                                          |
| <b>Other Names</b>        | Carboxypeptidase O; CPO                                                                                         |
| <b>Target/Specificity</b> | Recognizes endogenous levels of Carboxypeptidase O protein.                                                     |
| <b>Dilution</b>           | WB~~WB (1/500 - 1/1000)                                                                                         |
| <b>Format</b>             | Liquid in 0.42% Potassium phosphate, 0.87% Sodium chloride, pH 7.3, 30% glycerol, and 0.09% (W/V) sodium azide. |
| <b>Storage</b>            | Store at -20 °C.Stable for 12 months from date of receipt                                                       |

## Protein Information

---

|                          |                                                                                                                                                                                                                    |
|--------------------------|--------------------------------------------------------------------------------------------------------------------------------------------------------------------------------------------------------------------|
| <b>Name</b>              | CPO ( <a href="#">HGNC:21011</a> )                                                                                                                                                                                 |
| <b>Function</b>          | Carboxypeptidase which preferentially cleaves C-terminal acidic residues from peptides and proteins. Can also cleave C-terminal hydrophobic amino acids, with a preference for small residues over large residues. |
| <b>Cellular Location</b> | Apical cell membrane; Lipid-anchor, GPI-anchor                                                                                                                                                                     |
| <b>Tissue Location</b>   | Detected in enterocytes of the ileum.                                                                                                                                                                              |

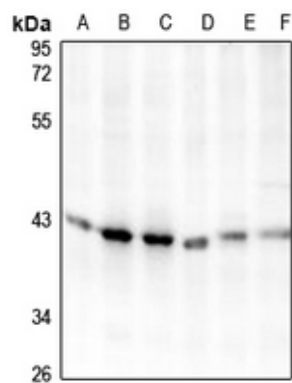
## Background

---

KLH-conjugated synthetic peptide encompassing a sequence within the center region of human Carboxypeptidase O. The exact sequence is proprietary.

## Images

---



Western blot analysis of Carboxypeptidase O expression in H1792 (A), MCF7 (B), U87MG (C), CT26 (D), C6 (E), DLD (F) whole cell lysates.

Please note: All products are 'FOR RESEARCH USE ONLY. NOT FOR USE IN DIAGNOSTIC OR THERAPEUTIC PROCEDURES'.