

Anti-CHSY3 Antibody

Rabbit polyclonal antibody to CHSY3

Catalog # AP61329

Product Information

Application	WB
Primary Accession	Q70JA7
Other Accession	Q5DTK1
Reactivity	Human, Mouse, Rat
Host	Rabbit
Clonality	Polyclonal
Calculated MW	100284

Additional Information

Gene ID	337876
Other Names	CHSY2; CSS3; Chondroitin sulfate synthase 3; Carbohydrate synthase 2; Chondroitin glucuronyltransferase 3; Chondroitin synthase 2; ChSy-2; Glucuronosyl-N-acetylgalactosaminyl-proteoglycan 4-beta-N-acetylgalactosaminyltransferase II; N-acetylgalactosaminyl-proteoglycan 3-beta-glucuronosyltransferase 3; N-acetylgalactosaminyltransferase 3
Target/Specificity	KLH-conjugated synthetic peptide encompassing a sequence within the N-term region of human CHSY3. The exact sequence is proprietary.
Dilution	WB~~WB (1/500 - 1/1000)
Format	Liquid in 0.42% Potassium phosphate, 0.87% Sodium chloride, pH 7.3, 30% glycerol, and 0.09% (W/V) sodium azide.
Storage	Store at -20 °C.Stable for 12 months from date of receipt

Protein Information

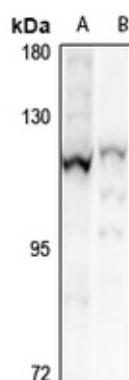
Name	CHSY3
Synonyms	CHSY2, CSS3
Function	<p>Has both beta-1,3-glucuronic acid and beta-1,4-N- acetylgalactosamine transferase activity. Transfers glucuronic acid (GlcUA) from UDP-GlcUA and N-acetylgalactosamine (GalNAc) from UDP- GalNAc to the non-reducing end of the elongating chondroitin polymer. Specific activity is much reduced compared to CHSY1.</p> <p>Golgi apparatus, Golgi stack membrane; Single-pass type II membrane</p>

Cellular Location	protein
Tissue Location	Detected at low levels in brain, cerebral cortex, uterus and small intestine.

Background

KLH-conjugated synthetic peptide encompassing a sequence within the N-term region of human CHSY3. The exact sequence is proprietary.

Images



Western blot analysis of CHSY3 expression in HeLa (A), mouse brain (B) whole cell lysates.

Please note: All products are 'FOR RESEARCH USE ONLY. NOT FOR USE IN DIAGNOSTIC OR THERAPEUTIC PROCEDURES'.