

Anti-CD55 Antibody

Rabbit polyclonal antibody to CD55

Catalog # AP61330

Product Information

Application	WB
Primary Accession	P08174
Reactivity	Human, Rat
Host	Rabbit
Clonality	Polyclonal
Calculated MW	41400

Additional Information

Gene ID	1604
Other Names	CR; DAF; Complement decay-accelerating factor; CD55
Target/Specificity	Recognizes endogenous levels of CD55 protein.
Dilution	WB~~WB (1/500 - 1/1000)
Format	Liquid in 0.42% Potassium phosphate, 0.87% Sodium chloride, pH 7.3, 30% glycerol, and 0.09% (W/V) sodium azide.
Storage	Store at -20 °C.Stable for 12 months from date of receipt

Protein Information

Name	CD55
Synonyms	CR, DAF
Function	This protein recognizes C4b and C3b fragments that condense with cell-surface hydroxyl or amino groups when nascent C4b and C3b are locally generated during C4 and c3 activation. Interaction of daf with cell-associated C4b and C3b polypeptides interferes with their ability to catalyze the conversion of C2 and factor B to enzymatically active C2a and Bb and thereby prevents the formation of C4b2a and C3bBb, the amplification convertases of the complement cascade (PubMed: 7525274). Inhibits complement activation by destabilizing and preventing the formation of C3 and C5 convertases, which prevents complement damage (PubMed: 28657829).
Cellular Location	[Isoform 1]: Cell membrane; Single-pass type I membrane protein [Isoform 3]: Secreted [Isoform 5]: Secreted [Isoform 7]: Cell membrane; Lipid-anchor, GPI-anchor

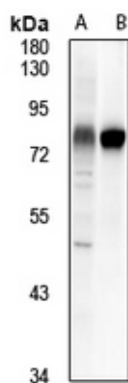
Tissue Location

Expressed on the plasma membranes of all cell types that are in intimate contact with plasma complement proteins. It is also found on the surfaces of epithelial cells lining extracellular compartments, and variants of the molecule are present in body fluids and in extracellular matrix

Background

KLH-conjugated synthetic peptide encompassing a sequence within the center region of human CD55. The exact sequence is proprietary.

Images



Western blot analysis of CD55 expression in A549 (A), rat lung (B) whole cell lysates.

Please note: All products are 'FOR RESEARCH USE ONLY. NOT FOR USE IN DIAGNOSTIC OR THERAPEUTIC PROCEDURES'.