

# Anti-RFX2 Antibody

Rabbit polyclonal antibody to RFX2

Catalog # AP61331

## Product Information

Application	WB, IHC
Primary Accession	<a href="#">P48378</a>
Reactivity	Human
Host	Rabbit
Clonality	Polyclonal
Calculated MW	79987

## Additional Information

Gene ID	5990
Other Names	DNA-binding protein RFX2; Regulatory factor X 2
Target/Specificity	KLH-conjugated synthetic peptide encompassing a sequence within the C-term region of human RFX2. The exact sequence is proprietary.
Dilution	WB~~WB (1/500 - 1/1000), IHC (1/50 - 1/200) IHC~~WB (1/500 - 1/1000), IHC (1/50 - 1/200)
Format	Liquid in 0.42% Potassium phosphate, 0.87% Sodium chloride, pH 7.3, 30% glycerol, and 0.09% (W/V) sodium azide.
Storage	Store at -20 °C.Stable for 12 months from date of receipt

## Protein Information

Name	RFX2
Function	Transcription factor that acts as a key regulator of spermatogenesis. Acts by regulating expression of genes required for the haploid phase during spermiogenesis, such as genes required for cilium assembly and function (By similarity). Recognizes and binds the X-box, a regulatory motif with DNA sequence 5'-GTNRCC(0-3N)RGYAAC-3' present on promoters (PubMed: <a href="#">10330134</a> ). Probably activates transcription of the testis-specific histone gene H1-6 (By similarity).
Cellular Location	Nucleus {ECO:0000250 UniProtKB:B2GV50, ECO:0000255 PROSITE-ProRule:PRU00858}. Cytoplasm {ECO:0000250 UniProtKB:B2GV50}. Note=Mainly expressed in the nucleus and at lower level in cytoplasm. {ECO:0000250 UniProtKB:B2GV50}

## Background

---

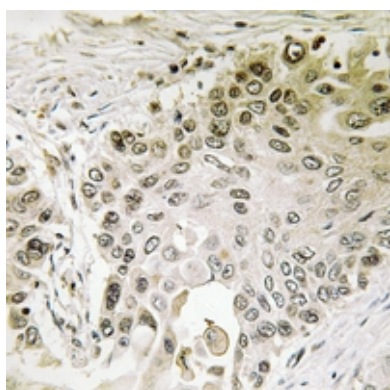
KLH-conjugated synthetic peptide encompassing a sequence within the C-term region of human RFX2. The exact sequence is proprietary.

## Images

---



Western blot analysis of RFX2 expression in A2780 (A) whole cell lysates.



Immunohistochemical analysis of RFX2 staining in human lung cancer formalin fixed paraffin embedded tissue section. The section was pre-treated using heat mediated antigen retrieval with sodium citrate buffer (pH 6.0). The section was then incubated with the antibody at room temperature and detected using an HRP conjugated compact polymer system. DAB was used as the chromogen. The section was then counterstained with haematoxylin and mounted with DPX.

Please note: All products are 'FOR RESEARCH USE ONLY. NOT FOR USE IN DIAGNOSTIC OR THERAPEUTIC PROCEDURES'.