

Anti-SIX5 Antibody

Rabbit polyclonal antibody to SIX5
Catalog # AP61335

Product Information

Application	WB
Primary Accession	Q8N196
Other Accession	P70178
Reactivity	Human, Mouse
Host	Rabbit
Clonality	Polyclonal
Calculated MW	74562

Additional Information

Gene ID	147912
Other Names	DMAHP; Homeobox protein SIX5; DM locus-associated homeodomain protein; Sine oculis homeobox homolog 5
Target/Specificity	Recognizes endogenous levels of SIX5 protein.
Dilution	WB~~WB (1/500 - 1/1000)
Format	Liquid in 0.42% Potassium phosphate, 0.87% Sodium chloride, pH 7.3, 30% glycerol, and 0.09% (W/V) sodium azide.
Storage	Store at -20 °C.Stable for 12 months from date of receipt

Protein Information

Name	SIX5
Synonyms	DMAHP
Function	Transcription factor that is thought to be involved in regulation of organogenesis. May be involved in determination and maintenance of retina formation. Binds a 5'-GGTGTCTAG-3' motif present in the ARE regulatory element of ATP1A1. Binds a 5'-TCA[AG][AG]TTNC-3' motif present in the MEF3 element in the myogenin promoter, and in the IGFBP5 promoter (By similarity). Thought to be regulated by association with Dach and Eya proteins, and seems to be coactivated by EYA1, EYA2 and EYA3 (By similarity).
Cellular Location	Cytoplasm. Nucleus {ECO:0000255 PROSITE-ProRule:PRU00108, ECO:0000269 PubMed:12500905} Expressed in adult but not in fetal eyes. Found in corneal epithelium and

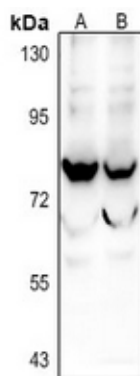
Tissue Location

endothelium, lens epithelium, ciliary body epithelia, cellular layers of the retina and the sclera

Background

KLH-conjugated synthetic peptide encompassing a sequence within the center region of human SIX5. The exact sequence is proprietary.

Images



Western blot analysis of SIX5 expression in SGC7901 (A), LO2 (B) whole cell lysates.

Please note: All products are 'FOR RESEARCH USE ONLY. NOT FOR USE IN DIAGNOSTIC OR THERAPEUTIC PROCEDURES'.