

Anti-CD85h Antibody

Rabbit polyclonal antibody to CD85h

Catalog # AP61336

Product Information

Application	WB, IF/IC
Primary Accession	Q8N149
Reactivity	Human
Host	Rabbit
Clonality	Polyclonal
Calculated MW	52966

Additional Information

Gene ID	11027
Other Names	ILT1; LIR7; Leukocyte immunoglobulin-like receptor subfamily A member 2; CD85 antigen-like family member H; Immunoglobulin-like transcript 1; ILT-1; Leukocyte immunoglobulin-like receptor 7; LIR-7; CD85h
Target/Specificity	KLH-conjugated synthetic peptide encompassing a sequence within the center region of human CD85h. The exact sequence is proprietary.
Dilution	WB~~WB (1/500 - 1/1000), IF/IC (1/100 - 1/500) IF/IC~~N/A
Format	Liquid in 0.42% Potassium phosphate, 0.87% Sodium chloride, pH 7.3, 30% glycerol, and 0.09% (W/V) sodium azide.
Storage	Store at -20 °C.Stable for 12 months from date of receipt

Protein Information

Name	LILRA2
Synonyms	ILT1, LIR7
Function	Part of the innate immune responses against microbial infection (PubMed: 12529506 , PubMed: 27572839). Specifically recognizes a set of N-terminally truncated immunoglobulins that are produced via cleavage by proteases from a range of pathogenic bacteria and fungi, including <i>L.pneumophila</i> , <i>M.hyorhinis</i> , <i>S.pneumoniae</i> , <i>S.aureus</i> and <i>C.albicans</i> (PubMed: 27572839). Recognizes epitopes that are in part in the variable region of the immunoglobulin light chains, but requires also the constant region for signaling (PubMed: 27572839). Binds to a subset of cleaved IgM, IgG3 and IgG4 molecules, but does not bind cleaved IgA1 (PubMed: 27572839). Binding of N-terminally truncated immunoglobulins mediates activation of neutrophils (PubMed: 27572839). In monocytes,

activation leads to the release of CSF2, CF3, IL6, CXCL8 and CCL3 and down-regulates responses to bacterial lipopolysaccharide (LPS), possibly via down-regulation of TLR4 expression and reduced signaling via TLR4 (PubMed:[22479404](#)). In eosinophils, activation by ligand binding leads to the release of RNASE2, IL4 and leukotriene C4 (PubMed:[12529506](#)). Does not bind class I MHC antigens (PubMed:[19230061](#)).

Cellular Location

Cell membrane; Single-pass type I membrane protein

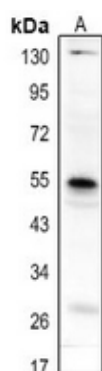
Tissue Location

Detected on the surface of all peripheral blood monocytes, neutrophils, basophils and eosinophils (at protein level) (PubMed:12529506, PubMed:22479404). Expression levels are very low or not detectable on monocytes, T-cells, B-cells, dendritic cells and natural killer (NK) cells (PubMed:9548455)

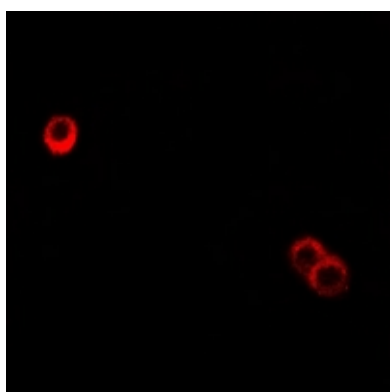
Background

KLH-conjugated synthetic peptide encompassing a sequence within the center region of human CD85h. The exact sequence is proprietary.

Images



Western blot analysis of CD85h expression in SHSY5Y (A) whole cell lysates.



Immunofluorescent analysis of CD85h staining in HuvEc cells. Formalin-fixed cells were permeabilized with 0.1% Triton X-100 in TBS for 5-10 minutes and blocked with 3% BSA-PBS for 30 minutes at room temperature. Cells were probed with the primary antibody in 3% BSA-PBS and incubated overnight at 4 °C in a humidified chamber. Cells were washed with PBST and incubated with a Alexa Fluor 594-conjugated secondary antibody (red) in PBS at room temperature in the dark.

Please note: All products are 'FOR RESEARCH USE ONLY. NOT FOR USE IN DIAGNOSTIC OR THERAPEUTIC PROCEDURES'.