

Anti-ME1 Antibody

Rabbit polyclonal antibody to ME1

Catalog # AP61339

Product Information

Application	WB
Primary Accession	P48163
Reactivity	Human, Rat, Pig
Host	Rabbit
Clonality	Polyclonal
Calculated MW	64150

Additional Information

Gene ID	4199
Other Names	NADP-dependent malic enzyme; NADP-ME; Malic enzyme 1
Target/Specificity	Recognizes endogenous levels of ME1 protein.
Dilution	WB~~WB (1/500 - 1/1000)
Format	Liquid in 0.42% Potassium phosphate, 0.87% Sodium chloride, pH 7.3, 30% glycerol, and 0.09% (W/V) sodium azide.
Storage	Store at -20 °C.Stable for 12 months from date of receipt

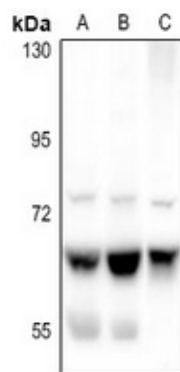
Protein Information

Name	ME1 (HGNC:6983)
Function	Catalyzes the oxidative decarboxylation of (S)-malate in the presence of NADP(+) and divalent metal ions, and decarboxylation of oxaloacetate.
Cellular Location	Cytoplasm.
Tissue Location	Expressed in all tissues tested including liver, placenta and white adipose tissue.

Background

KLH-conjugated synthetic peptide encompassing a sequence within the C-term region of human ME1. The exact sequence is proprietary.

Images



Western blot analysis of ME1 expression in Panc1 (A), SGC7901 (B), rat skin (C) whole cell lysates.

Please note: All products are 'FOR RESEARCH USE ONLY. NOT FOR USE IN DIAGNOSTIC OR THERAPEUTIC PROCEDURES'.