

# Anti-NCAM2 Antibody

Rabbit polyclonal antibody to NCAM2

Catalog # AP61341

## Product Information

---

Application	WB
Primary Accession	<a href="#">O15394</a>
Other Accession	<a href="#">O35136</a>
Reactivity	Human, Mouse, Rat
Host	Rabbit
Clonality	Polyclonal
Calculated MW	93046

## Additional Information

---

Gene ID	4685
Other Names	NCAM21; Neural cell adhesion molecule 2; N-CAM-2; NCAM-2
Target/Specificity	Recognizes endogenous levels of NCAM2 protein.
Dilution	WB~~WB (1/500 - 1/1000)
Format	Liquid in 0.42% Potassium phosphate, 0.87% Sodium chloride, pH 7.3, 30% glycerol, and 0.09% (W/V) sodium azide.
Storage	Store at -20 °C.Stable for 12 months from date of receipt

## Protein Information

---

Name	NCAM2
Synonyms	NCAM21
Function	May play important roles in selective fasciculation and zone- to-zone projection of the primary olfactory axons.
Cellular Location	Cell membrane; Single-pass type I membrane protein
Tissue Location	Expressed most strongly in adult and fetal brain.

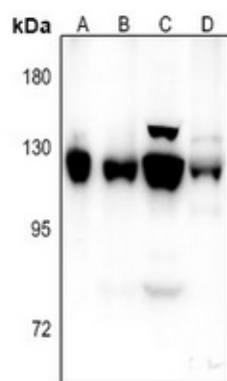
## Background

---

KLH-conjugated synthetic peptide encompassing a sequence within the center region of human NCAM2. The exact sequence is proprietary.

## Images

---



Western blot analysis of NCAM2 expression in SKOV3 (A), LOVO (B), BV2 (C), H9C2 (D) whole cell lysates.

Please note: All products are 'FOR RESEARCH USE ONLY. NOT FOR USE IN DIAGNOSTIC OR THERAPEUTIC PROCEDURES'.