

Anti-ARHGEF11 Antibody

Rabbit polyclonal antibody to ARHGEF11

Catalog # AP61342

Product Information

Application	WB
Primary Accession	O15085
Reactivity	Human, Mouse
Host	Rabbit
Clonality	Polyclonal
Calculated MW	167704

Additional Information

Gene ID	9826
Other Names	KIAA0380; Rho guanine nucleotide exchange factor 11; PDZ-RhoGEF
Target/Specificity	KLH-conjugated synthetic peptide encompassing a sequence within the N-term region of human ARHGEF11. The exact sequence is proprietary.
Dilution	WB~~WB (1/500 - 1/1000)
Format	Liquid in 0.42% Potassium phosphate, 0.87% Sodium chloride, pH 7.3, 30% glycerol, and 0.09% (W/V) sodium azide.
Storage	Store at -20 °C.Stable for 12 months from date of receipt

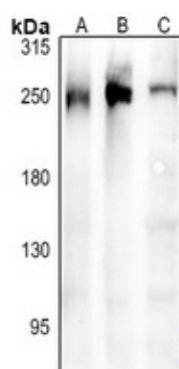
Protein Information

Name	ARHGEF11
Synonyms	KIAA0380
Function	May play a role in the regulation of RhoA GTPase by guanine nucleotide-binding alpha-12 (GNA12) and alpha-13 (GNA13). Acts as guanine nucleotide exchange factor (GEF) for RhoA GTPase and may act as GTPase-activating protein (GAP) for GNA12 and GNA13. Involved in neurotrophin-induced neurite outgrowth.
Cellular Location	Cytoplasm. Membrane. Note=Translocated to the membrane upon stimulation
Tissue Location	Ubiquitously expressed.

Background

KLH-conjugated synthetic peptide encompassing a sequence within the N-term region of human ARHGEF11. The exact sequence is proprietary.

Images



Western blot analysis of ARHGEF11 expression in Raw264.7 (A), HepG2 (B), MCF7 (C) whole cell lysates.

Please note: All products are 'FOR RESEARCH USE ONLY. NOT FOR USE IN DIAGNOSTIC OR THERAPEUTIC PROCEDURES'.