

Anti-Septin 2 Antibody

Rabbit polyclonal antibody to Septin 2
Catalog # AP61343

Product Information

Application	WB
Primary Accession	Q15019
Other Accession	P42208
Reactivity	Human, Mouse, Rat, Bovine
Host	Rabbit
Clonality	Polyclonal
Calculated MW	41487

Additional Information

Gene ID	4735
Other Names	DIFF6; KIAA0158; NEDD5; Septin-2; Neural precursor cell expressed developmentally down-regulated protein 5; NEDD-5
Target/Specificity	Recognizes endogenous levels of Septin 2 protein.
Dilution	WB~~WB (1/500 - 1/1000)
Format	Liquid in 0.42% Potassium phosphate, 0.87% Sodium chloride, pH 7.3, 30% glycerol, and 0.09% (W/V) sodium azide.
Storage	Store at -20 °C.Stable for 12 months from date of receipt

Protein Information

Name	SEPTIN2 (HGNC:7729)
Function	Filament-forming cytoskeletal GTPase. Forms a filamentous structure with SEPTIN12, SEPTIN6, SEPTIN2 and probably SEPTIN4 at the sperm annulus which is required for the structural integrity and motility of the sperm tail during postmeiotic differentiation (PubMed: 25588830). Required for normal organization of the actin cytoskeleton. Plays a role in the biogenesis of polarized columnar- shaped epithelium by maintaining polyglutamylated microtubules, thus facilitating efficient vesicle transport, and by impeding MAP4 binding to tubulin. Required for the progression through mitosis. Forms a scaffold at the midplane of the mitotic spindle required to maintain CENPE localization at kinetochores and consequently chromosome congression. During anaphase, may be required for chromosome segregation and spindle elongation. Plays a role in ciliogenesis and collective cell movements. In cilia, required for the integrity of the diffusion barrier at the base of the primary cilium that prevents diffusion of transmembrane proteins between the cilia

and plasma membranes: probably acts by regulating the assembly of the tectonic-like complex (also named B9 complex) by localizing TMEM231 protein. May play a role in the internalization of 2 intracellular microbial pathogens, *Listeria monocytogenes* and *Shigella flexneri*.

Cellular Location

Cytoplasm. Cytoplasm, cytoskeleton. Cytoplasm, cytoskeleton, spindle. Chromosome, centromere, kinetochore. Cleavage furrow. Midbody. Cytoplasm, cell cortex. Cell projection, cilium membrane. Cell projection, cilium, flagellum. Note=In metaphase cells, localized within the microtubule spindle. At the metaphase plate, in close apposition to the kinetochores of the congressed chromosomes. In cells undergoing cytokinesis, localized to the midbody, the ingressing cleavage furrow, and the central spindle. During bacterial infection, displays a collar shape structure next to actin at the pole of invading bacteria. In epithelial cells, colocalizes with polyglutamylated tubulin around the trans-Golgi network, as well as juxtanuclear and proximal Golgi apparatus. Localizes at the base of the cilia near the morphological distinction between the cilia and plasma membranes. Found in the sperm annulus (PubMed:25588830).

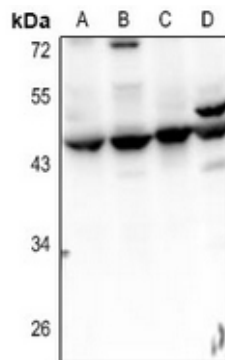
Tissue Location

Widely expressed. Up-regulated in liver cancer.

Background

KLH-conjugated synthetic peptide encompassing a sequence within the center region of human Septin 2. The exact sequence is proprietary.

Images



Western blot analysis of Septin 2 expression in HepG2 (A), HEK293T (B), PC12 (C), AML12 (D) whole cell lysates.

Please note: All products are 'FOR RESEARCH USE ONLY. NOT FOR USE IN DIAGNOSTIC OR THERAPEUTIC PROCEDURES'.