

Anti-NPT3 Antibody

Rabbit polyclonal antibody to NPT3

Catalog # AP61344

Product Information

Application	WB
Primary Accession	O00624
Reactivity	Human
Host	Rabbit
Clonality	Polyclonal
Calculated MW	47277

Additional Information

Gene ID	10246
Other Names	NPT3; Sodium-dependent phosphate transport protein 3; Na(+)/PI cotransporter 3; Sodium/phosphate cotransporter 3; Solute carrier family 17 member 2
Target/Specificity	KLH-conjugated synthetic peptide encompassing a sequence within the center region of human NPT3. The exact sequence is proprietary.
Dilution	WB~~WB (1/500 - 1/1000)
Format	Liquid in 0.42% Potassium phosphate, 0.87% Sodium chloride, pH 7.3, 30% glycerol, and 0.09% (W/V) sodium azide.
Storage	Store at -20 °C.Stable for 12 months from date of receipt

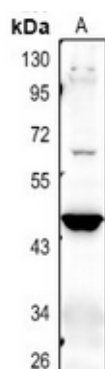
Protein Information

Name	SLC17A2
Synonyms	NPT3
Function	Acts as a membrane potential-dependent organic anion transporter, the transport requires a low concentration of chloride ions (By similarity). Mediates chloride-dependent transport of urate (By similarity). Can actively transport inorganic phosphate into cells via Na(+) cotransport (By similarity).
Cellular Location	Apical cell membrane {ECO:0000250 UniProtKB:Q5SZA1}; Multi-pass membrane protein
Tissue Location	Expressed in the small intestine, kidney, spleen and testis. Not detected in fetal brain, bone marrow, and mammary gland.

Background

KLH-conjugated synthetic peptide encompassing a sequence within the center region of human NPT3. The exact sequence is proprietary.

Images



Western blot analysis of NPT3 expression in HCT116 (A) whole cell lysates.

Please note: All products are 'FOR RESEARCH USE ONLY. NOT FOR USE IN DIAGNOSTIC OR THERAPEUTIC PROCEDURES'.