

Anti-CD215 Antibody

Rabbit polyclonal antibody to CD215

Catalog # AP61346

Product Information

Application	WB
Primary Accession	Q13261
Other Accession	Q60819
Reactivity	Human, Mouse, Rat
Host	Rabbit
Clonality	Polyclonal
Calculated MW	28233

Additional Information

Gene ID	3601
Other Names	Interleukin-15 receptor subunit alpha; IL-15 receptor subunit alpha; IL-15R-alpha; IL-15RA; CD215
Target/Specificity	Recognizes endogenous levels of CD215 protein.
Dilution	WB~~WB (1/500 - 1/1000)
Format	Liquid in 0.42% Potassium phosphate, 0.87% Sodium chloride, pH 7.3, 30% glycerol, and 0.09% (W/V) sodium azide.
Storage	Store at -20 °C.Stable for 12 months from date of receipt

Protein Information

Name	IL15RA
Function	High-affinity receptor for interleukin-15 (PubMed: 8530383). Can signal both in cis and trans where IL15R from one subset of cells presents IL15 to neighboring IL2RG-expressing cells (By similarity). In neutrophils, binds and activates kinase SYK in response to IL15 stimulation (PubMed: 15123770). In neutrophils, required for IL15- induced phagocytosis in a SYK-dependent manner (PubMed: 15123770). Expression of different isoforms may alter or interfere with signal transduction (PubMed: 10480910).
Cellular Location	Membrane; Single- pass type I membrane protein. Nucleus membrane; Single-pass type I membrane protein. Cell surface. Note=Mainly found associated with the nuclear membrane [Isoform 6]: Endoplasmic reticulum membrane; Single-pass type I membrane protein. Golgi apparatus membrane; Single- pass type I membrane protein. Cytoplasmic vesicle membrane; Single-pass type I membrane protein. Membrane; Single-pass

type I membrane protein Note=Isoform 5, isoform 6, isoform 7 and isoform 8 are associated with endoplasmic reticulum, Golgi and cytoplasmic vesicles, but not with the nuclear membrane [Isoform 8]: Endoplasmic reticulum membrane; Single-pass type I membrane protein. Golgi apparatus membrane; Single- pass type I membrane protein. Cytoplasmic vesicle membrane; Single-pass type I membrane protein. Membrane; Single-pass type I membrane protein Note=Isoform 5, isoform 6, isoform 7 and isoform 8 are associated with endoplasmic reticulum, Golgi and cytoplasmic vesicles, but not with the nuclear membrane

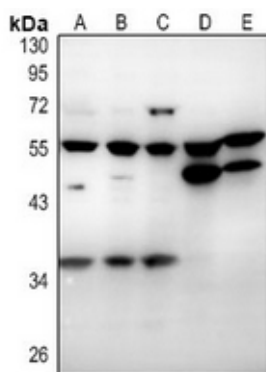
Tissue Location

Expressed in neutrophils (at protein level) (PubMed:15123770). Expressed in fetal brain with higher expression in the hippocampus and cerebellum than in cortex and thalamus (PubMed:12114302). Higher levels of soluble sIL-15RA form in comparison with membrane-bound forms is present in all brain structures (PubMed:12114302). Isoforms 1, 3, 4, 5, 6, 7, 8 and 9: Widely expressed (PubMed:10480910, PubMed:8530383).

Background

KLH-conjugated synthetic peptide encompassing a sequence within the center region of human CD215. The exact sequence is proprietary.

Images



Western blot analysis of CD215 expression in SGC7901 (A), HCT116 (B), A2780 (C), mouse brain (D), rat stomach (E) whole cell lysates.

Please note: All products are 'FOR RESEARCH USE ONLY. NOT FOR USE IN DIAGNOSTIC OR THERAPEUTIC PROCEDURES'.